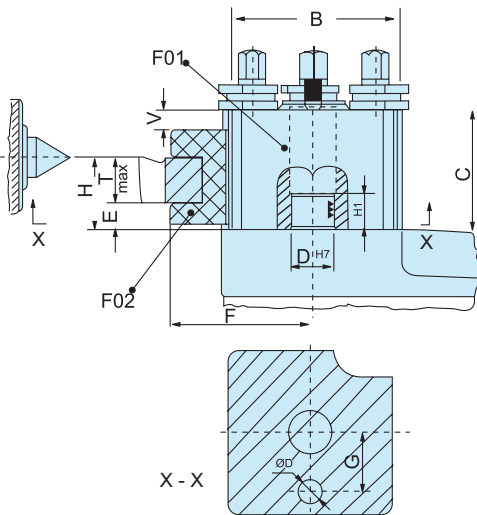




**NEW**




### Italian Style

- The main block is assembled with cast-hardened steel, secured rigidly by the latch carriage machine steel bolt.
- The main block has 4 slide openings for inserting the proper tool-holder; these can be securely fastened by a simple and safe eccentric device, which also adjusts the height for each tool holder.
- The tool shank is securely held by 4 hardened screws. The simplicity and fast tool changing increase the production of lathe turning.
- No chatter or vibrations.
- This style is interchangeable with Rapidue and STM.

### Complete set includes:

- 1 pieces Tool post
- 3 pieces of turning holders
- 1 piece of Round shanks
- Standard spanners

### MAIN BODY DIMENSIONS

ORDER NO.	Lathe swing	B	D <sup>H7</sup>	H		C	E	T <sub>max</sub>	F	V <sub>max</sub>	Ø <sub>max</sub>	Morse NO.	ØD	G	H1		
				Min	Max												
VTP-M	180-250	57.7	18	24	34	45	8	16	56	10	14	1	7	27	18	70	
VTP-AR-AP	250-300	64.5	18	25	41	56	9	16	63	16	16	1	8	30	16	80	
VTP-A	250-350	82.0	24	32	42	60	12	20	75	10	18	2	10	35	20	100	
VTP-BR-BP	300-380	91.6	28	38	53	75	13	25	90	17	20	3	10	40	20	115	
VTP-B	350-500	100.0	30	47	65	85	15	32	100	15	24	3	12	48.2	25	127	
VTP-C	500-650	115.3	38	51	72	94	19	32	108	24	26	4	14	58.2	26	145	

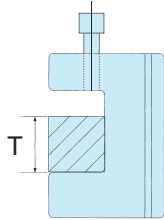
### SET TYPE

ORDER NO.	5-PIECE SETS EACH SET INCLUDES	G.W. kgs	CODE NO.
VTP-M	1 x F01-M, 3 x F02-M AND 1 x F03-M	3.1	5006-890
VTP-AR-AP	1 x F01-AR-AP, 3 x F02-AR-AP AND 1 x F03-AR-AP	4.5	5006-891
VTP-A	1 x F01-A, 3 x F02-A AND 1 x F03-A	9.3	5006-892
VTP-BR-BP	1 x F01-BR-BP, 3 x F02-BR-BP AND 1 x F03-BR-BP	13.2	5006-893
VTP-B	1 x F01-B, 3 x F02-B AND 1 x F03-B	17.5	5006-894
VTP-C	1 x F01-C, 3 x F02-C AND 1 x F03-C	23.0	5006-895



## Tool Post

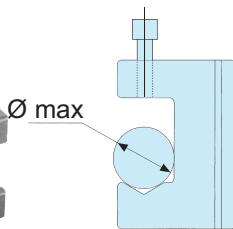
ORDER NO.	Centre Height (mm)	Lathe Swing (mm)	CODE NO.
VTP-F01-M	120	240	5006-900
VTP-F01-AR-AP	140	280	5006-901
VTP-F01-A	170	340	5006-902
VTP-F01-BR-BP	200	400	5006-903
VTP-F01-B	230	460	5006-904
VTP-F01-C	280	560	5006-905



● Turning Holders

## Turning Holder

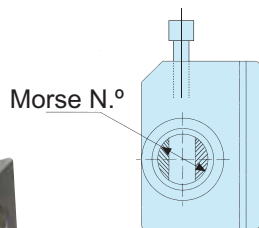
ORDER NO.	Centre Height (mm)	Max. Square & Rectangular Tool (mm)	CODE NO.
VTP-F02-M	120	16	5006-906
VTP-F02-AR-AP	140	16	5006-907
VTP-F02-A	170	20	5006-908
VTP-F02-BR-BP	200	25	5006-909
VTP-F02-B	230	32	5006-910
VTP-F02-C	280	32	5006-911



● Round Shanks

## Round Shanks

ORDER NO.	Centre Height (mm)	Max. Holding Dia (mm)	CODE NO.
VTP-F03-M	120	14	5006-912
VTP-F03-AR-AP	140	16	5006-913
VTP-F03-A	170	18	5006-914
VTP-F03-BR-BP	200	20	5006-915
VTP-F03-B	230	24	5006-916
VTP-F03-C	280	26	5006-917



● Morse Holder

## Morse Holder

ORDER NO.	Centre Height (mm)	Morse Taper Hole	CODE NO.
VTP-F04-M	120	MT No. 1	5006-918
VTP-F04-AR-AP	140	MT No. 2	5006-919
VTP-F04-A	170	MT No. 2	5006-920
VTP-F04-BR-BP	200	MT No. 3	5006-921
VTP-F04-B	230	MT No. 3	5006-922
VTP-F04-C	280	MT No. 4	5006-923



# Quick Change Tool Post & Holders-40

## Positioning European Style



**NEW**



### European Style

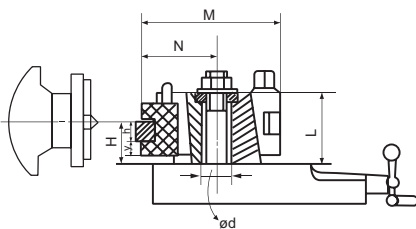
Tool post and tool holders are precisely grounded with 40 tool-bit positions. Easy to operate and can be fitted with many different tool-holders. Locking and loosening of any tool-holders are performed by a simple eccentric clamping. The simplicity and fast tool changing increases the lathe turning production. A height adjustment for tool bits is controlled by a knurled head-screw, without the need for packing plates or shims. This style is interchangeable with Hasse.

### Complete set includes:

- 1 Pieces Tool post
- 3 pieces Turning & Facing Holder-"D"
- 1 piece Boring Bar Holder-"B"

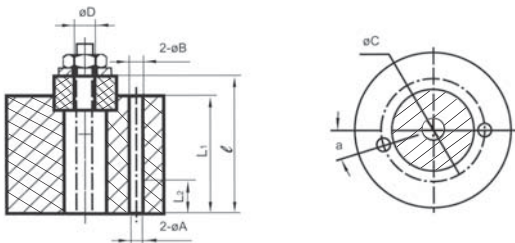
ORDER NO.	5-PIECE SETS EACH SET INCLUDES (5 pcs/set)	G.W. kgs	CODE NO.
VTP-V-A0	1 x tool post F40-0(A0), 2 x F40-010(A0D12x50) and 1 x F40-020(A0B12x50) and 1 x F40-040(A0A2.7x10x50)	1.5	5006-955A
VTP-V-A1	1 x tool post F40-1(A1), 2 x F40-111(A1D16x75) and 1 x F40-140(A1A2.7x10x75) and 1 x F40-121(A1B16x80)	4.0	5006-956A
VTP-V-E5	1 x tool post F40-2(B5), 2 x F40-211(E5D20x100) and 1 x F40-220(E5B30x100) and 1 x F40-240(E5A2.7x10x100)	8.0	5006-957A
VTP-B2	1 x tool post F40-3(B2), 3 x F40-311(B2D25x120) and 1 x F40-320(B2B32x130)	12.3	5006-958
VTP-C3	1 x tool post F40-4(C3), 3 x F40-411(C3D32x150) and 1 x F40-422(C3B40x160)	24.3	5006-959

### Set Style For Lathe



ORDER NO.	VTP-F40-0	VTP-F40-1	VTP-F40-2	VTP-F40-3	VTP-F40-4
	D12	D16 D20	D20 D25	D25 D32	D32 D40 D45
Driving Power (kw)	1.2	2	4.5	7	13
Lathe Swing (mm)	120-220	150-300	200-400	300-500	400-700
H min. (mm)	18.5	25.5 29.5	32 37	38 46	47.5 55.5 61
H max. (mm)	26.5	36.5 40.5	49 52	58 57	87.5 91.5 91
y (mm)	6.5	9.5	12	13 14	15.5 15.5 16
h (mm)	12	16 20	20 25	25 32	32 40 45
M (mm)	6.8	104	132	150	192 201 202
L (mm)	37	55	68	76	107
N (mm)	34	52	66	73	93 102 103
ød (mm)	13	20	20	32	40

### 40 Position Tool Post Body



ORDER NO.	ØD	L2	L1	ℓ	ØA	ØB	ØC	α
VTP-F40-0	6	-	30	37	-	-	-	-
VTP-F40-1	10	12	45	55.3	5.6	6.8	42	18°
VTP-F40-2	10	14	57	67.3	5.6	6.8	49	15°
VTP-F40-3	14	20	65	75	6.9	9	64	30°
VTP-F40-4	24.5	10	95	107	9.5	11	88	18°

### 40 Position Tool Post



ORDER NO.	Lathe swing (mm)	For Style NO.	Height of cutting edge range (mm)	CODE NO.
VTP-F40-0	120-220	VTP-A0	D12/18.5~26.5	5006-930
VTP-F40-1	150-300	VTP-A1	D16/25.5~36.5 or D20/29.5~40.5	5006-931
VTP-F40-2	200-400	VTP-E5	D20/32~49 or D25/37~52	5006-932
VTP-F40-3	300-500	VTP-B2	D25/38~58 or D32/46~57	5006-933
VTP-F40-4	400-700	VTP-C3	D32/47.5~87.5 or D40/55.5~91.5 or D45/61~91	5006-934



# Quick Change Tool Post & Holders-40

## Positioning European Style



**NEW**



### Turning & Facing Holder

ORDER NO.	Series NO.	Max. Height (mm)	Max. Length (mm)	CODE NO.
VTP-F40-010	A0D	12	50	5006-935
VTP-F40-111	A1D	16	75	5006-936
VTP-F40-112	A1D	16	80	5006-937
VTP-F40-113	A1D	16	90	5006-938
VTP-F40-114	A1D	20	75	5006-939
VTP-F40-110	A1D	20	80	5006-940
VTP-F40-115	A1D	20	90	5006-941
VTP-F40-211	E5D	20	100	5006-942
VTP-F40-212	E5D	25	100	5006-943
VTP-F40-311	B2D	25	120	5006-944
VTP-F40-312	B2D	25	140	5006-945
VTP-F40-313	B2D	32	120	5006-946
VTP-F40-314	B2D	32	140	5006-947
VTP-F40-411	C3D	32	150	5006-948
VTP-F40-412	C3D	32	170	5006-949
VTP-F40-413	C3D	40	150	5006-950
VTP-F40-414	C3D	40	170	5006-951
VTP-F40-415	C3D	45	170	5006-952



### Boring Bar Holder

ORDER NO.	Series NO.	Max. Dia (mm)	Length (mm)	CODE NO.
VTP-F40-020	A0B	12	50	5006-960
VTP-F40-121	A1B	16	80	5006-961
VTP-F40-120	A1B	18	80	5006-962
VTP-F40-122	A1B	20	90	5006-963
VTP-F40-220	E5B	30	100	5006-964
VTP-F40-320	B2B	32	130	5006-965
VTP-F40-421	C3B	32	160	5006-966
VTP-F40-422	C3B	40	160	5006-967



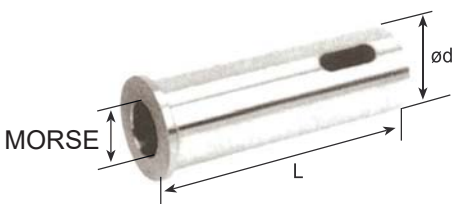
### Drilling & Boring Bar Holder

ORDER NO.	Series NO.	Max. Dia (mm)	Length (mm)	CODE NO.
VTP-F40-030	A0S	15	50	5006-968
VTP-F40-130	A1S	30	80	5006-969
VTP-F40-131	A1S	20	90	5006-970
VTP-F40-231	E5S	30	100	5006-971
VTP-F40-232	E5S	40	100	5006-972
VTP-F40-330	B2S	40	120	5006-973
VTP-F40-431	C3S	40	150	5006-974
VTP-F40-432	C3S	50	150	5006-975



### Cut-Off Tool Holder

ORDER NO.	Series NO.	Blade- TxW	Length (mm)	CODE NO.
VTP-F40-040	A0A	2.7 x 10	50	5006-976
VTP-F40-140	A1A	2.7 x 10	75	5006-977
VTP-F40-240	E5A	2.7 x 10	100	5006-978
VTP-F40-340	B2A	4 x 16	120	5006-979
VTP-F40-440	C3A	5 x 18.5	150	5006-980



### Morse Taper Bushing

ORDER NO.	Series NO.	Diameter (mm)	Length (mm)	Morse Taper	CODE NO.
VTP-F40-151	A1L	30	80	NO.1	5006-981
VTP-F40-152	A1L	30	90	NO.2	5006-982
VTP-F40-251	E5L	30	96	NO.2	5006-983
VTP-F40-252	E5L	40	114	NO.3	5006-984
VTP-F40-350	E5L	40	120	NO.2	5006-985
VTP-F40-351	E5L	40	120	NO.3	5006-986
VTP-F40-451	C3L	40	140	NO.3	5006-987
VTP-F40-452	C3L	40	150	NO.4	5006-988
VTP-F40-453	C3L	50	150	NO.4	5006-989

TOOL POST

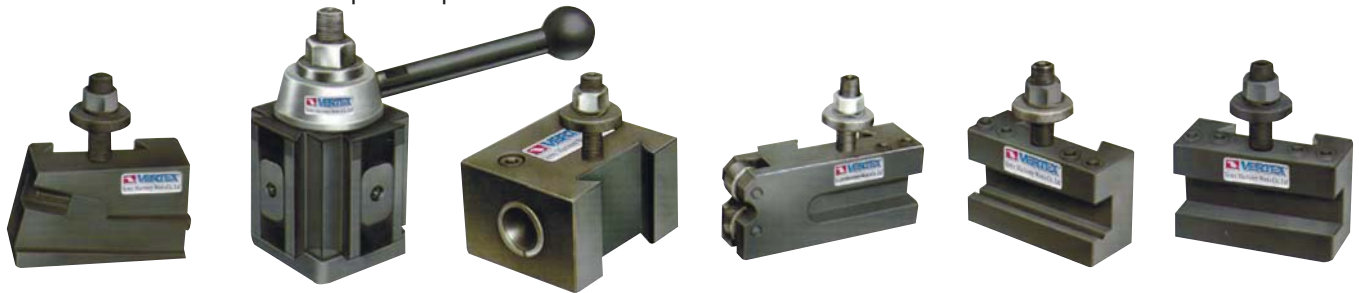


# Quick Change Tool Post American Type



**NEW**

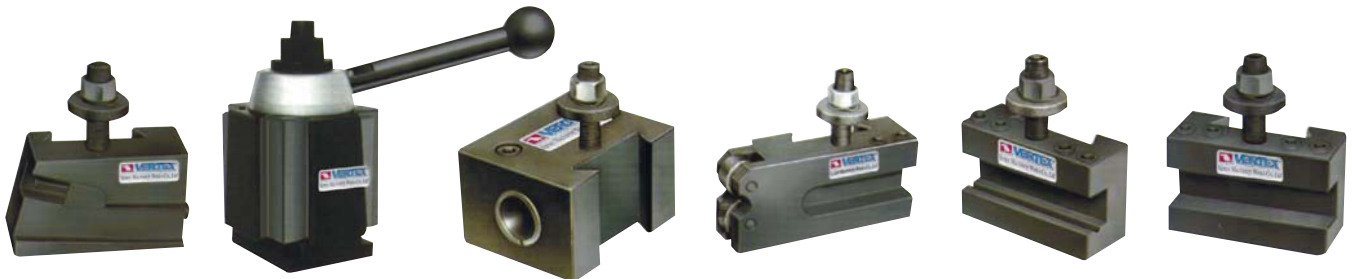
- For conventional lathe.
- The height of the post unit can be adjusted to desire position & center line.
- Can choose set type or separated holders.
- Harden & precise positions.



PISTON TYPE SETS VTP-□□□□P TYPE  
BODY WITH 6 PCS HOLDER

## PISTON STYLE TOOL POST SETS

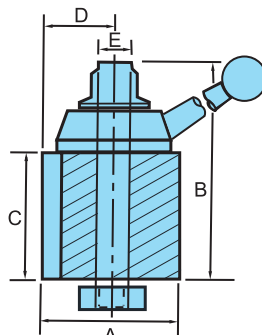
ORDER NO.	LATHE SWING	6-PIECE SETS EACH SET INCLUDES (6PCS/SET)	N. W. KGS	CODE NO.
VTP-0012P	12"	1 xF50-100, 1 xF50-101, 1 xF50-102 1 xF50-104, 1 xF50-107, 1 xF50-110 EACH 1PCS	5.5	5006-1101
VTP-1015P	10"-15"	1 xF50-200, 1 xF50-201, 1 xF50-202 1 xF50-204, 1 xF50-207, 1 xF50-210 EACH 1PCS	8	5006-1102
VTP-1318P	13"-18"	1 xF50-300, 1 xF50-301, 1 xF50-302 1 xF50-304, 1 xF50-307, 1 xF50-310 EACH 1PCS	11.5	5006-1103
VTP-1420P	14"-20"	1 xF50-400, 1 xF50-401, 1 xF50-402 1 xF50-404, 1 xF50-407, 1 xF50-410 EACH 1PCS	21	5006-1104



WEDGE TYPE SETS VTP-□□□□W TYPE  
BODY WITH 6 PCS HOLDER

## WEDGE STYLE TOOL POST SETS

ORDER NO.	LATHE SWING	6-PIECE SETS EACH SET INCLUDES (6PCS/SET)	N. W. KGS	CODE NO.
VTP-0012W	12"	1 xF50-111, 1 xF50-101, 1 xF50-102 1 xF50-104, 1 xF50-107, 1 xF50-110 EACH 1PCS	5.5	5006-1121
VTP-1015W	10"-15"	1 xF50-222, 1 xF50-201, 1 xF50-202 1 xF50-204, 1 xF50-207, 1 xF50-210 EACH 1PCS	8.0	5006-1122
VTP-1318W	13"-18"	1 xF50-333, 1 xF50-301, 1 xF50-302 1 xF50-304, 1 xF50-307, 1 xF50-310 EACH 1PCS	12.8	5006-1123
VTP-1420W	14"-20"	1 xF50-444, 1 xF50-401, 1 xF50-402 1 xF50-404, 1 xF50-407, 1 xF50-410 EACH 1PCS	21.0	5006-1124
VTP-1748W	17"-48"	1 xF50-555, 1 xF50-501, 1 xF50-502 1 xF50-504, 1 xF50-507, 1 xF50-510 EACH 1PCS	40.0	5006-1125



## QUICK CHANGE TOOL POST PISTON STYLE-ACCESSORIES

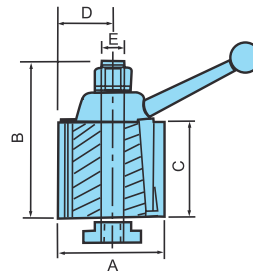
ORDER NO.	SWING FOR LATHE		A		B		C		D		E	CODE NO.
	INCH	MERTIC	INCH	MERTIC	INCH	MERTIC	INCH	MERTIC	INCH	MERTIC		
VTP-F50-1	12	304	2 1/2	63.5	3 3/4	95.25	2 1/4	57.15	1 7/16	36.512	M14X1.5	5006-1131
VTP-F50-2	10-15	255-380	3	76.2	4 3/8	111.125	2 3/4	69.85	1 5/8	41.275	M16X1.5	5006-1132
VTP-F50-3	13-18	330-455	3 3/8	85.725	4 7/8	123.825	3	76.2	1 7/8	47.625	M20X2	5006-1133
VTP-F50-4	14-20	355-505	4	101.6	6	152.4	3 5/8	92.075	2 1/8	53.975	M20X2	5006-1134



# Quick Change Tool Post American Type

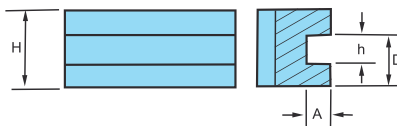


**NEW**



## QUICK CHANGE TOOL POST WEDGE STYLE

ORDER NO.	SWING FOR LATHE		A		B		C		D		E	CODE NO.
	INCH	MERTIC	INCH	MERTIC	INCH	MERTIC	INCH	MERTIC	INCH	MERTIC		
VTP-F50-11	12	304	2 1/2	63.5	3 3/4	95.25	2 1/4	57.15	1 3/8	34.925	M14X1.5	5006-1141
VTP-F50-22	10-15	255-380	3	76.2	4 3/8	111.125	2 3/4	69.85	1 9/16	39.68	M16X1.5	5006-1142
VTP-F50-33	13-18	330-455	3 1/2	88.9	4 7/8	123.83	3	76.2	1 29/32	48.42	M20X2	5006-1143
VTP-F50-44	14-20	355-505	4	101.6	6	152.4	3 5/8	92.075	2 1/8	53.975	M22X2	5006-1144
VTP-F50-55	17-48	435-1215	5	127	7 3/8	187.32	4 5/8	117.47	2 11/16	68.26	M24X2	5006-1145

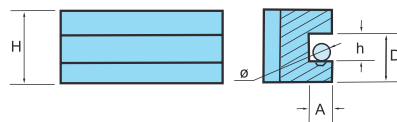


## TURNING AND FACING HOLDER



ORDER NO.	A		D		H		h		CODE NO.
	INCH	MERTIC	INCH	MERTIC	INCH	MERTIC	INCH	MERTIC	
VTP-F50-101	7/16	11.11	15/16	23.81	1 1/2	38.1	1/2	12.7	5006-1151
VTP-F50-201	1/2	12.7	1 1/8	28.57	1 3/4	44.45	5/8	15.87	5006-1152
VTP-F50-301	5/8	15.87	1 7/16	36.51	2 1/8	53.97	3/4	19.05	5006-1153
VTP-F50-401	3/4	19.05	1 11/16	42.86	2 1/2	63.5	1	25.4	5006-1154
VTP-F50-501	1	25.4	3 3/16	55.56	3 1/8	79.37	1 1/4	31.75	5006-1155

Suitable for any size smaller than max. Height h.

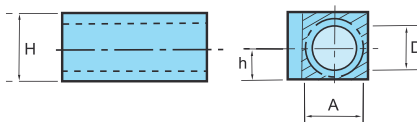


## BORING, TURNING AND FACING HOLDER



ORDER NO.	A		D		H		h		Ø		CODE NO.
	INCH	MERTIC	INCH	MERTIC	INCH	MERTIC	INCH	MERTIC	INCH	MERTIC	
VTP-F50-102	7/16	11.11	15/16	23.81	1 1/2	38.1	1/2	12.7	7/16	11.11	5006-1161
VTP-F50-202	1/2	12.7	1 1/8	28.57	1 3/4	44.45	5/8	15.87	1/2	12.7	5006-1162
VTP-F50-302	5/8	15.87	1 7/16	36.51	2 1/8	53.97	3/4	19.05	5/8	15.87	5006-1163
VTP-F50-402	3/4	19.05	1 11/16	42.86	2 1/2	63.5	1	25.4	3/4	19.05	5006-1164
VTP-F50-502	1	25.4	3 3/16	55.56	3 1/8	79.37	1 1/4	31.75	1 1/8	28.57	5006-1165

Suitable for square and round shank & boring bars.



• Split bushing suitable for small boring bars & drill.

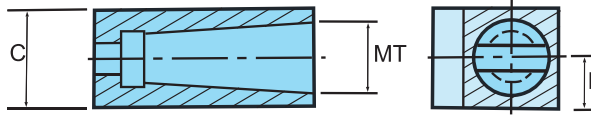
## HEAVY DUTY BORING BAR HOLDER



ORDER NO.	A		D		H		h		CODE NO.
	INCH	MERTIC	INCH	MERTIC	INCH	MERTIC	INCH	MERTIC	
VTP-F50-104	3/4	19.05	5/8	15.87	1 1/2	38.1	3/4	19.05	5006-1171
VTP-F50-204	1	25.4	3/4	19.05	1 3/4	44.45	7/8	22.22	5006-1172
VTP-F50-304	1	25.4	3/4	19.05	2	50.8	1	25.4	5006-1173
VTP-F50-404	1 1/4	31.75	1	25.4	2 1/2	63.5	1 1/4	31.75	5006-1174
VTP-F50-504	1 1/2	38.1	1 1/4	31.75	3 1/8	79.37	1 9/16	39.68	5006-1175
VTP-F50-141	1	25.4	3/4	19.05	1 3/4	44.45	7/8	22.22	5006-1176
VTP-F50-241	1 1/4	31.75	1	25.4	2	50.8	1	25.4	5006-1177
VTP-F50-341	1 1/4	31.75	1	25.4	2 1/4	57.15	1 1/8	28.57	5006-1178
VTP-F50-441	1 1/2	31.75	1 1/4	25.4	2 3/4	57.15	1 3/8	28.75	5006-1179



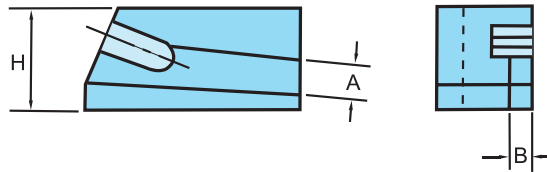
# Quick Change Tool Post American Type



## MORSE TAPER HOLDER FOR DRILLING

ORDER NO.	C		h		M.T	CODE NO.
	INCH	MERTIC	INCH	MERTIC		
VTP-F50-105	1 1/2	38.1	3/4	19.5	2	5006-1191
VTP-F50-205	1 3/4	44.45	7/8	22.225	2	5006-1192
VTP-F50-305	2	50.8	1	25.4	3	5006-1193
VTP-F50-405	2 1/2	63.5	1 1/4	31.75	3	5006-1194
VTP-F50-153	1 1/2	38.1	3/4	19.05	3	5006-1195
VTP-F50-253	1 3/4	44.45	7/8	22.22	3	5006-1196
VTP-F50-353	2 1/8	53.97	1 1/16	26.98	4	5006-1197
VTP-F50-453	2 3/8	60.32	1 3/16	30.16	4	5006-1198

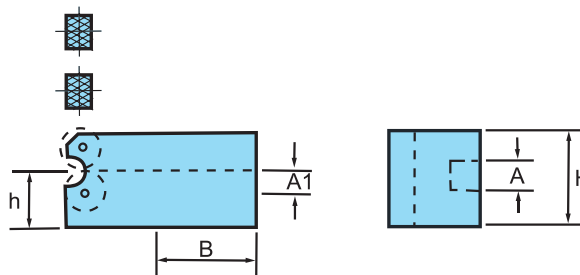
Allows to install a dead center serve as a tail stock.  
Suitable for drilling & boring & reaming.



## UNIVERSAL PARTING BLADE TOOL HOLDER

ORDER NO.	A		B		H		CODE NO.
	INCH	MERTIC	INCH	MERTIC	INCH	MERTIC	
VTP-F50-107	1/2	12.7	3/16	4.76	1 1/2	38.1	5006-1211
VTP-F50-207	11/16	17.46	3/16	4.76	1 3/4	44.45	5006-1212
VTP-F50-307	3/4	19.05	3/16	4.76	2	50.8	5006-1213
VTP-F50-407	7/8	22.23	1/4	6.35	2 1/2	63.5	5006-1214
VTP-F50-507	1 3/16	30.16	1/4	6.35	2 3/4	69.85	5006-1215

Suitable for cutting tool.



## KNURLING, TURNING & FACING HOLDER

ORDER NO.	A		A1		B		H		h		CODE NO.
	INCH	MERTIC	INCH	MERTIC	INCH	MERTIC	INCH	MERTIC	INCH	MERTIC	
VTP-F50-110	1/2	12.7	3/8	9.53	2 1/2	63.5	1 9/16	39.68	7/8	22.22	5006-1221
VTP-F50-210	5/8	15.87	1/2	12.7	2 5/8	66.67	1 3/4	44.45	1	25.4	5006-1222
VTP-F50-310	3/4	19.05	1/2	12.7	3 1/8	79.37	2	50.8	1 3/16	30.16	5006-1223
VTP-F50-410	1	25.4	3/4	19.05	3 3/4	95.25	2 1/2	63.5	1 7/16	36.51	5006-1224
VTP-F50-510	1 1/4	31.75	1	25.4	4 1/2	114.3	3 1/8	79.37	1 7/8	47.62	5006-1225

Suitable for knurling, facing & boring.