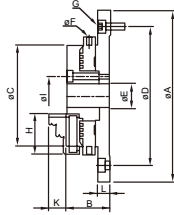
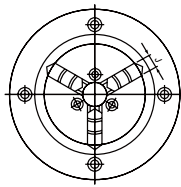


# Low Profile Chuck



**NEW**

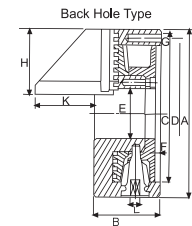
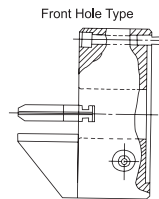
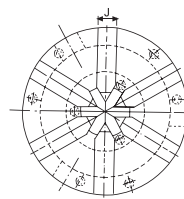
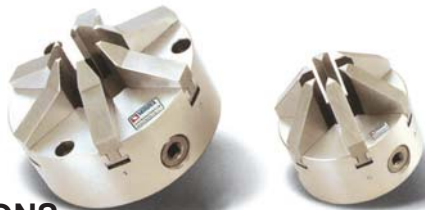


- Compact, Small And Light Weight
- No Wrench Required, Turn To Loose & Lock By Fixing Ring
- Steel Made Body
- Reversible Jaws
- VLBK-Series Is Latest Vertical Clamping Design For CNC, Milling Machine And Machining Center.

## DIMENSIONS

ORDER NO.	A	B	C	D	E	F	G	H	I	J	K	L	Gripping Range		Weight (kgs)	CODE NO.
													O.D. Range	I.D. Range		
VLBK-2	118	28	63	100	16	4	4-M5X0.8P	27	26	8	13	8	ø0.8~ø63	ø23~ø58	1.2	5002-130
VLBK-3	143	37	85	116	20	4	4-M6X1.0P	35	32	11	15	10.5	ø1~ø81	ø31~ø70	2.9	5002-131
VLBK-4	168	39	110	140	26	5	4-M6X1.0P	42	40	14	19	10	ø1~ø100	ø36~ø90	4.6	5002-132
VLBK-5	202	45	130	168	32	6	4-M8X1.25P	50	49	16	21	11.5	ø1.5~ø116	ø43~ø106	6.2	5002-133
VLBK-6	248	52	160	208	50	8	4-M10X1.5P	65	70	19	26	15	ø1.5~ø160	ø52~ø148	11	5002-134

# 6-Jaw Awl Type Chucks

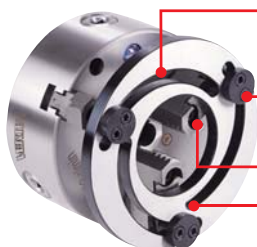


## SPECIFICATIONS

ORDER NO.	A	B	C	D	E	F	G	H	J	K	L	Gross Weight (kgs)	Max. Speed (r.p.m.)	Max. Gripping Diameter	CODE NO.
														O.D. Clamping	
VAS-4	112	58	80	95	32	4.5	3-M8	45	14	46	8	4.2	1200	ø2-32	5005-011
VAS-6	167	65	130	147	60	5	3-M10	66	19	43	10	9.2	1200	ø3-60	5005-012

Unit:mm

# Soft Jaw Forming Ring



- The size can be adjusted against the helical slot.
- Bias pin can be rotated 180 degree for different size to extend a clamping range.
- Don't need to drill new hole. The hole on the soft jaws can be used directly for bias pin.
- The material, is hardened and ground, can last for a long time.



## FAETURES

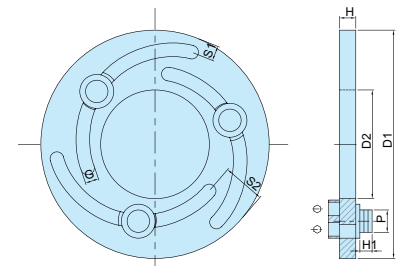
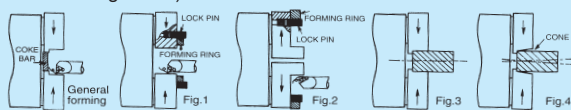
## CHUCK NOT INCLUDED

- Forming ring is available for 5", 6", 8", 10" & 12" power chuck.
- The clamping force is increasing. the roundness and vibration caused by eccentricity can be improved. The cutting accuracy is much better because of no taper hole(as fig.3) and less vibration.
- Both Clamping(as fig. 1) and extension (as fig. 2) are available. Meanwhile ,the size adjusting is at will, the operation is easy and enduring.
- More improvement for used chuck to have better accuracy & strong clamping force .
- For CNC Lathe.

## INSTRUCTION

Because the forming ring is used for cutting soft jaws by clamping and with extending. through-hole could increase the accuracy of clamping work piece. (please refer to fig.1,2&3)

As fig.4 the soft jaw is created without forming ring. Cause bad accuracy. The clamping force is not stable & vibration will occur.



ORDER NO.	SUIT TO SK-CHUCK SIZE	H	D1	D2	S1	S2	G	H1	O	KGS	CODE NO.
VFR-05	5"	12	140	60	12	28	10	9	13.5	1	5002-360
VFR-06	6"	12	168	80	12	32	10	9	16.5	1.5	5002-361
VFR-08	8"	12	218	115	17	36	10	9	18.5	2.4	5002-362
VFR-10	10"	12	258	150	15	40	10	9	18.5	3	5002-363
VFR-12	12"	15	316	188	21	50	10	9	21.5	5	5002-364
VFR-15	15"	20	380	230	23	52	12	16	31	10.1	5002-365