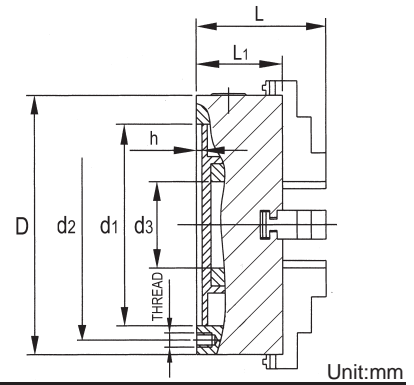
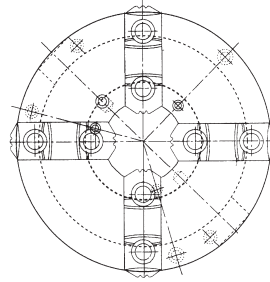




4-Jaw Self Centering Chucks (2-Pieces Jaw)



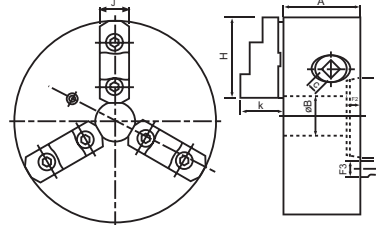
SPECIFICATIONS

ORDER NO.	D	d1	d2	d3	L	L1	h	THREAD	GRIPPING RANGE		WEIGHT (kgs)	CODE NO.
									O.D. RANGE	I.D. RANGE		
VPS-6AK	165	130	145	45	109	65	5	3-M8	Ø4-Ø165	Ø55-Ø150	9.5	5002-055
VPS-8AK	200	165	180	65	122	75	5	3-M10	Ø4-Ø200	Ø65-Ø200	14.8	5002-057
VPS-10AK	250	206	226	80	136	80	5	3-M12	Ø6-Ø250	Ø90-Ø250	24.7	5002-058
VPS-12AK	315	260	285	100	156.5	90	6	3-M16	Ø10-Ø315	Ø100-Ø315	45.7	5002-059

Unit:mm



3-Jaw Strong Scroll Chucks D1 Camlock Direct Mounting



(ASA spindle nose D1-4, D1-5, D1-6, D1-8)

BACK SAMPLE

American standard camlock type with 2-piece reversible hard top jaws.

- Gripping accuracy of 0.03mm(0.002inch)T.I.R.
- Standard accessories A chuck wrench and hex. key One set of mounting bolts.(UNC-bolts)
- The body is made of MEEHANITE.

It is suitably used for high speed revolution and 3 times more durable than regular chucks.

SPECIFICATIONS

ORDER NO.	Spindle Size	Chuck Size	A	B	C	H	J	K	Mounting Dimensions				Gripping Range		Weight (kg)	Allowable Handle Torque (kgf.m)	Gripping Force (kgf)	I (kgf.M ²)	Max. Speed (r.p.m.)	CODE NO.
									F1	F2	F3	F4	O.D. Range	I.D. Range						
KD5-8"	D1-5	200	77	46	11	82	28	42	82.563	14.3	19	104.78	Ø8-Ø180	Ø62-Ø170	18	11.5	3600	0.07	3200	5002-061
KD6-8"	D1-6	200	77	58	11	82	28	42	106.375	16	22	133.35	Ø8-Ø180	Ø62-Ø170	17	17	3600	0.07	3200	5002-063



3-Jaw Powerful Camlock Type Self-Centering Chuck

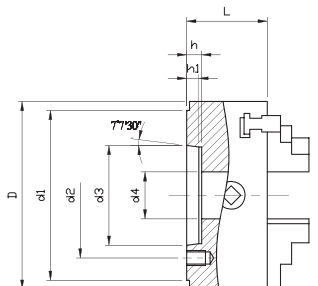
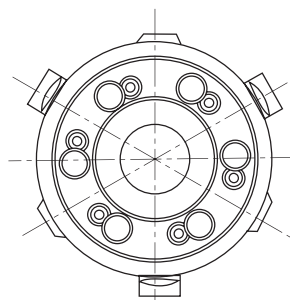
NEW



SAMPLE



Ød4	
D1-5	82.563
D1-6	106.375
D1-8	106.375
D1-11	106.357



SPECIFICATIONS

ORDER NO.	D	MOUNTING TYPE	d1	d2	d3	d4	L	H1	h	THREAD	WEIGHT (kgs)	CODE NO.
VSKC-6A	160	D5	40	104.8	146	82.563	12	73	15	6-M12x1.0P	10	5002-111
VSKC-8A	200	D6	50	133.4	181	106.375	13	86	16	6-M16x1.5P	17	5002-112
VSKC-10A	250	D6	70	133.4	181	106.375	13	98	16	6-M16x1.5P	32	5002-113
VSKC-12A	315	D6	100	133.4	181	106.375	13	103.5	16	6-M16x1.5P	49	5002-114