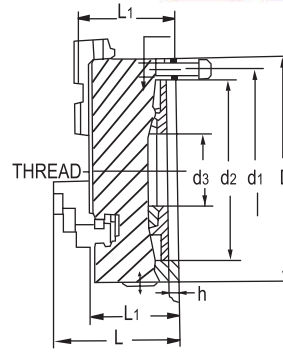
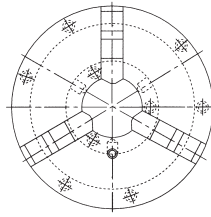




3 Jaw Self Centering Chuck



2 Set of Solid Jaw. Plain Back



SPECIFICATIONS

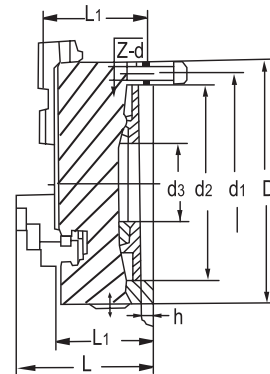
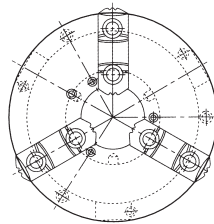
Unit:mm

ORDER NO.	D-Size	d1	d2	d3	L	L1	h	THREAD	GRIPPING RANGE		WEIGHT (kgs)	CODE NO.
									O.D. RANGE	I.D. RANGE		
VSC-3A	80mm(3")	66	55	16	66	50	3.5	3-M6	Ø2-Ø70	Ø24-Ø64	2	5002-020A
VSC-4A	100mm(4")	84	72	22	74.5	55	3.5	3-M8	Ø3-Ø90	Ø32-Ø84	3.3	5002-021A
VSC-5A	130mm(5")	115	100	30	78	55	3.5	3-M8	Ø3-Ø110	Ø35-Ø100	5.8	5002-022A
VSC-6A	160mm(6")	142	130	45	95	65	5	3-M8	Ø3-Ø160	Ø48-Ø150	9	5002-023A
VSC-7A	190mm(7 1/2")	172	155	55	105	75	5	3-M10	Ø4-Ø180	Ø56-Ø170	15.1	5002-024A
VSC-8A	200mm(8")	180	165	70	109	75	5	3-M10	Ø4-Ø180	Ø56-Ø170	15.6	5002-025A
VSC-9A	240mm(9 1/2")	215	195	70	122.5	80	5	3-M12	Ø5-Ø220	Ø62-Ø210	26	5002-026A
VSC-10A	250mm(10")	226	206	80	120	80	5	3-M12	Ø6-Ø220	Ø70-Ø250	26.5	5002-027A
VSC-12A	315mm(12")	285	260	100	147.5	90	6	3-M16	Ø10-Ø300	Ø86-Ø290	47	5002-028A
VSC-16A	400mm(16")	368	340	130	173.5	100	6	3-M16	Ø14-Ø400	Ø100-Ø380	73	5002-029A
VSC-20A	500mm(20")	465	440	210	202	115	6	3-M16	Ø25-Ø500	Ø150-Ø500	131	5002-030A
VSC-25A	630mm(25")	595	560	260	194	130	6	3-M16	Ø50-Ø630	Ø170-Ø630	200	5002-031A



3 Jaw Powerful Self Centering Chuck

Reversible Top Jaws. Plain Back



3 JAW SELF CENTERING CHUCK REVERSIBLE TOP JAWS. PLAIN BACK

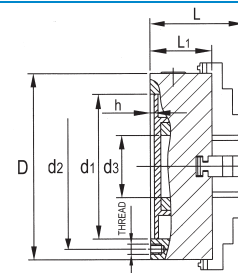
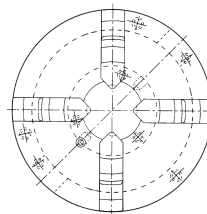
SPECIFICATIONS

Unit:mm

ORDER NO.	D-Size	d1	d2	d3	L	L1	h	THREAD	GRIPPING RANGE		WEIGHT (kgs)	CODE NO.
									O.D. RANGE	I.D. RANGE		
VSK-6A	160mm(6")	142	130	45	95	71	5	3-M8	Ø8-Ø160	Ø55-Ø150	8.3	5002-040A
VSK-8A	200mm(8")	180	165	65	109	78	5	3-M12	Ø8-Ø180	Ø62-Ø170	16	5002-042A
VSK-10A	250mm(10")	226	206	80	120	84	5	3-M12	Ø12-Ø260	Ø80-Ø250	21.7	5002-043A
VSK-12A	315mm(12")	285	260	100	156.5	102.5	6	3-M16	Ø15-Ø300	Ø90-Ø290	41	5002-043B
VSK-13A	325mm(13")	296	272	100	154.5	102.5	6	3-M16	Ø11.5-Ø350	Ø110-Ø340	45.8	5002-044A
VSK-15A	380mm(15")	350	325	130	156.5	104.5	6	3-M16	Ø11.5-Ø400	Ø110-Ø400	64.7	5002-045A
VSK-16A	400mm(16")	368	340	130	181.5	129.5	6	3-M16	Ø30-Ø470	Ø110-Ø380	75.5	5002-046A



4 Jaw Self Centering Chucks

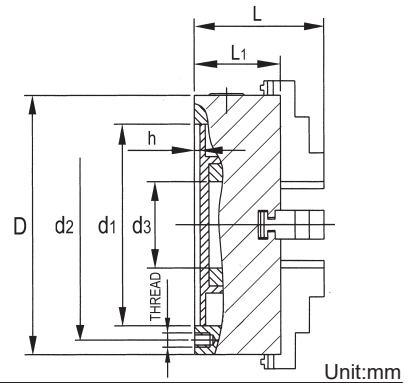
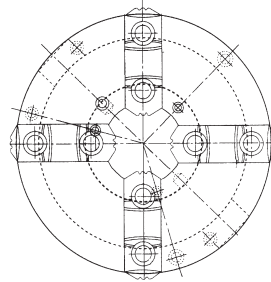


SPECIFICATIONS

ORDER NO.	D	d1	d2	d3	L	L1	h	THREAD	GRIPPING RANGE		WEIGHT (kgs)	CODE NO.
									O.D. RANGE	I.D. RANGE		
VPS-6A	165	130	145	45	94	65	5	3-M8	Ø4-Ø165	Ø55-Ø150	9.3	5002-050
VPS-8A	200	165	180	65	109	75	5	3-M10	Ø4-Ø200	Ø65-Ø200	16.6	5002-052
VPS-10A	250	206	226	80	120	80	5	3-M12	Ø6-Ø250	Ø90-Ø250	28	5002-053
VPS-12A	315	260	285	100	147.5	90	6	3-M16	Ø10-Ø315	Ø100-Ø315	54	5002-054



4-Jaw Self Centering Chucks (2-Pieces Jaw)



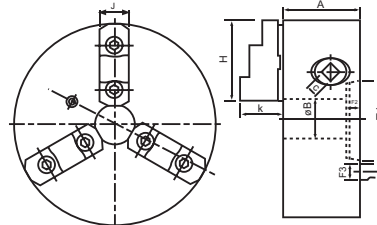
Unit:mm

SPECIFICATIONS

ORDER NO.	D	d1	d2	d3	L	L1	h	THREAD	GRIPPING RANGE		WEIGHT (kgs)	CODE NO.
									O.D. RANGE	I.D. RANGE		
VPS-6AK	165	130	145	45	109	65	5	3-M8	Ø4-Ø165	Ø55-Ø150	9.5	5002-055
VPS-8AK	200	165	180	65	122	75	5	3-M10	Ø4-Ø200	Ø65-Ø200	14.8	5002-057
VPS-10AK	250	206	226	80	136	80	5	3-M12	Ø6-Ø250	Ø90-Ø250	24.7	5002-058
VPS-12AK	315	260	285	100	156.5	90	6	3-M16	Ø10-Ø315	Ø100-Ø315	45.7	5002-059



3-Jaw Strong Scroll Chucks D1 Camlock Direct Mounting



(ASA spindle nose D1-4, D1-5, D1-6, D1-8)

BACK SAMPLE

American standard camlock type with 2-piece reversible hard top jaws.

- Gripping accuracy of 0.03mm(0.002inch)T.I.R.
- Standard accessories A chuck wrench and hex. key One set of mounting bolts.(UNC-bolts)
- The body is made of MEEHANITE.

It is suitably used for high speed revolution and 3 times more durable than regular chucks.

SPECIFICATIONS

ORDER NO.	Spindle Size	Chuck Size	A	B	C	H	J	K	Mounting Dimensions				Gripping Range		Weight (kg)	Allowable Handle Torque (kgf.m)	Gripping Force (kgf)	I (kgf.M ²)	Max. Speed (r.p.m.)	CODE NO.
									F1	F2	F3	F4	O.D. Range	I.D. Range						
KD5-8"	D1-5	200	77	46	11	82	28	42	82.563	14.3	19	104.78	Ø8-Ø180	Ø62-Ø170	18	11.5	3600	0.07	3200	5002-061
KD6-8"	D1-6	200	77	58	11	82	28	42	106.375	16	22	133.35	Ø8-Ø180	Ø62-Ø170	17	17	3600	0.07	3200	5002-063



3-Jaw Powerful Camlock Type Self-Centering Chuck

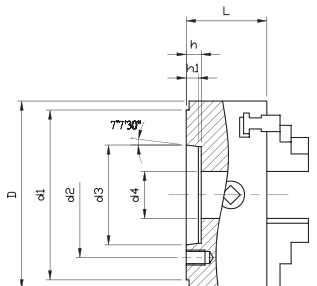
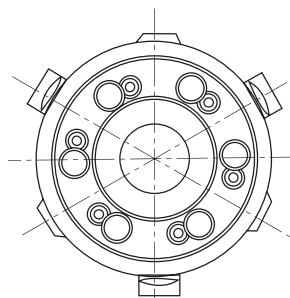
NEW



SAMPLE



Ød4	
D1-5	82.563
D1-6	106.375
D1-8	106.375
D1-11	106.357



SPECIFICATIONS

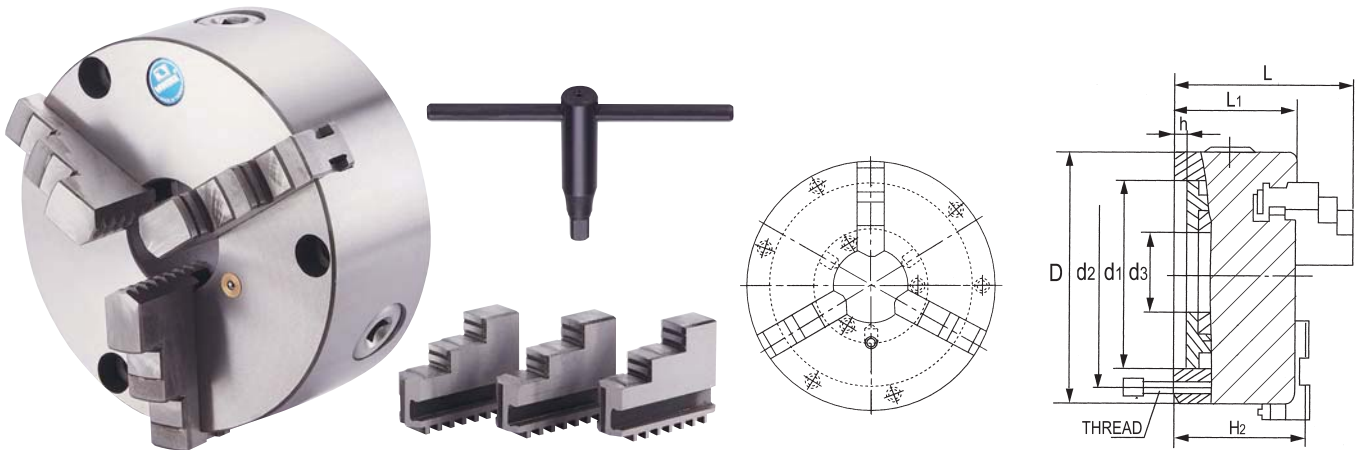
ORDER NO.	D	MOUNTING TYPE	d1	d2	d3	d4	L	H1	h	THREAD	WEIGHT (kgs)	CODE NO.
VSKC-6A	160	D5	40	104.8	146	82.563	12	73	15	6-M12x1.0P	10	5002-111
VSKC-8A	200	D6	50	133.4	181	106.375	13	86	16	6-M16x1.5P	17	5002-112
VSKC-10A	250	D6	70	133.4	181	106.375	13	98	16	6-M16x1.5P	32	5002-113
VSKC-12A	315	D6	100	133.4	181	106.375	13	103.5	16	6-M16x1.5P	49	5002-114



DIN-Type 3-Jaw Self-Centering Chucks



SIMILAR DIN6350



It have front mounting type as well.

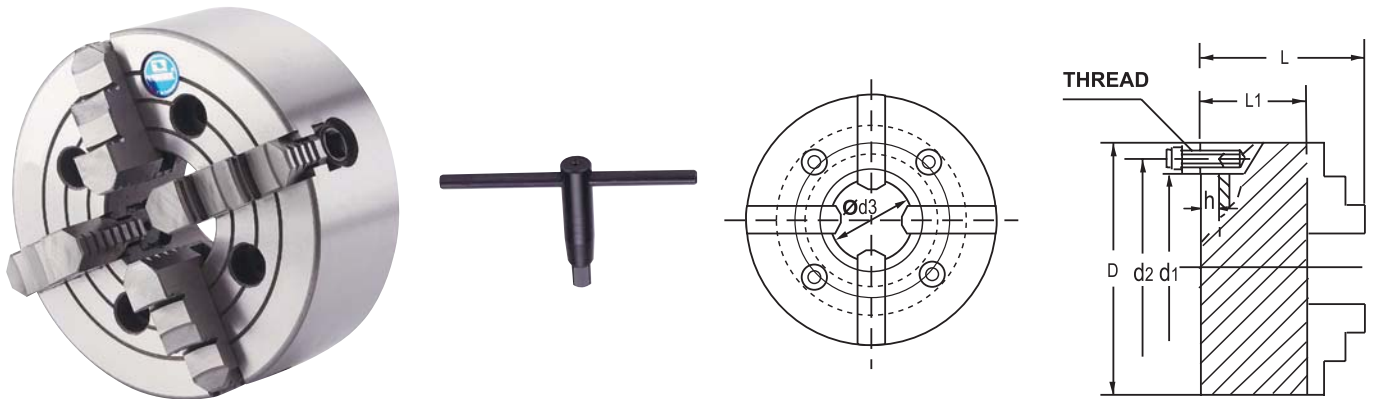
SPECIFICATIONS

Unit:mm

ORDER NO.	D	d1	d2	d3	L	L1	h	THREAD	R.P.M. MAX SPEED	GRIPPING RANGE		WEIGHT (kgs)	CODE NO.
										O.D. RANGE	I.D. RANGE		
VSC-3D	80	56	67	16	66.5	50	4	3-M6	4000	Ø2-Ø70	Ø22-Ø63	1.9	5002-215
VSC-4D	100	70	83	22	74.5	55	3	3-M8	3500	Ø2-Ø90	Ø30-Ø80	3.3	5002-216
VSC-5D	125	95	108	30	84.5	58	4	3-M8	3000	Ø2.5-Ø125	Ø38-Ø110	5.2	5002-217
VSC-6D	160	125	140	45	94	65	5	6-M10	2500	Ø3-Ø160	Ø55-Ø145	9.1	5002-218
VSC-8D	200	160	176	65	109	75	5	6-M10	2500	Ø4-Ø200	Ø65-Ø200	16	5002-219
VSC-10D	250	200	224	80	120	80	5	6-M12	1600	Ø6-Ø250	Ø90-Ø250	27.5	5002-219A



4-Jaw Independent Chuck Plain Back



SPECIFICATIONS

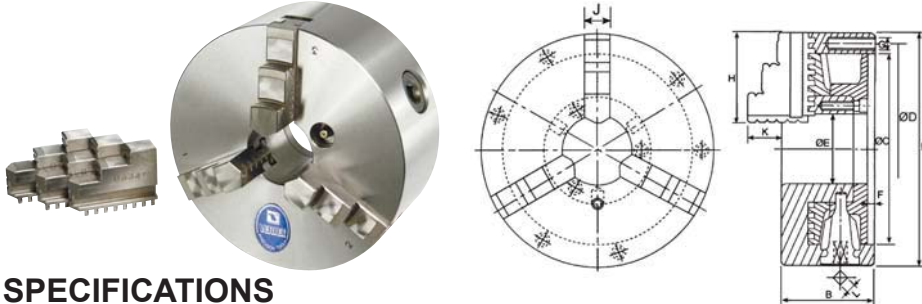
Unit:mm

ORDER NO.	D-size	d1	d2	d3	L	L1	h	THREAD	R.P.M. MAX SPEED	GRIPPING RANGE		WEIGHT (kgs)	CODE NO.
										O.D. RANGE	I.D. RANGE		
VKC-4	100mm(4")	72	84	25	74	54	3.5	4-M8	2300	Ø6-Ø45	Ø40-Ø100	3.5	5002-220
VKC-5	125mm(5")	95	108	30	78	56	4.5		1900	Ø7-Ø57	Ø48-Ø125	5.1	5002-221
VKC-6	160mm(6")	65	95	45	93	75	5	4-M10	1500	Ø8-Ø80	Ø50-Ø160	8.3	5002-222
VKC-8	200mm(8")	80	112	56	107	80	6		1350	Ø10-Ø100	Ø63-Ø200	15.9	5002-223
VKC-10	250mm(10")	110	130	75	120	90		8	1100	Ø15-Ø130	Ø80-Ø250	21.8	5002-224
VKC-12B	320mm(12")	140	165	95	134	90	4-M16		850	Ø20-Ø176	Ø100-Ø315	41	5002-226
VKC-14	350mm(14")	130	168	110		550		Ø20-Ø206	Ø100-Ø350	53.6	5002-227		
VKC-16	400mm(16")	160	185	125	143	95	8	550	Ø25-Ø250	Ø118-Ø400	56	5002-228	
VKC-20	500mm(21")	200	236	160	161	106		4-M20	350	Ø35-Ø300	Ø125-Ø500	105	5002-229
VKC-25	630mm(25")	220	258	180	175	118	10		280	Ø50-Ø400	Ø160-Ø630	162	5002-230
VKC-32	800mm(32")	250	300	210	202	132	12	8-M20	200	Ø70-Ø540	Ø200-Ø800	265	5002-231
VKC-40	1000mm(40")	320	370	260	241	150	15	8-M20	150	Ø100-680	Ø250-1000	536	5002-232
VKC-50	1250mm(50")	400	500	305	256	165	15	8-M20	150	Ø170-900	Ø250-1250	905	5002-233



3-Jaw Scroll Chuck

Accuracy Type



- Interchangeable utilization of internal and external hard jaws.
- VSC types feature economical and durable, suitable for mass production.
- Gripping accuracy of 0.03mm (0.012inch) T.I.R..
- The body is made of MEEHANITE. It is suitably used for high speed revolution and 3 times more durable than regular chucks.

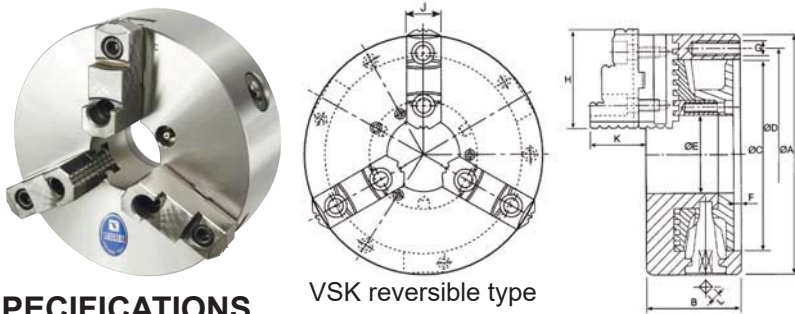
SPECIFICATIONS

ORDER NO.	Dim											Allowable Handle Torque (kgf.m)	Gripping Force (kgf)	I (kgf.m)	Weight (kgs)	Max. Speed (r.p.m.)	Gripping Range		CODE NO.
	A	B	C	D	E	F	G	H	J	K	L						O.D. Range	I.D. Range	
VSC-3	85	46	60	73	16	4	3-M6	36	11	15	7	3.0	900	-	1.9	2500	Ø2-Ø70	Ø24-Ø64	5002-001
VSC-4	112	59	80	95	24	4.5	3-M8	42	14	17	8	4.5	1200	-	3.9	2500	Ø3-Ø90	Ø32-Ø84	5002-002
VSC-5	132	60	100	115	32	4.5	3-M8	50	16	20	8	6.5	1500	0.01	3.9	2500	Ø3-Ø110	Ø35-Ø100	5002-003
VSC-6	165	67	130	147	45	5	3-M10	63	19	23	10	9.0	3300	0.03	9.6	2000	Ø3-Ø160	Ø48-Ø150	5002-004
VSC-7	192	76.5	155	172	58	5	3-M10	77	21.5	28	11	11.0	3600	0.06	14.2	2000	Ø4-Ø180	Ø56-Ø170	5002-005
VSC-8	200	76.5	160	176	58	5	3-M10	77	21.5	28	11	11.0	3600	0.07	15.2	2000	Ø4-Ø180	Ø56-Ø170	5002-006
VSC-9	232	84	190	210	70	6	3-M12	87	24	34.5	12	15.0	3900	0.15	22.8	2000	Ø5-Ø220	Ø62-Ø210	5002-007
VSC-10	273	87	230	250	87	8.5	3-M12	98	28	39	12	19.5	4800	0.25	30.8	1800	Ø6-Ø260	Ø70-Ø250	5002-008
VSC-12	310	96	260	285	105	7	3-M12	110	30	45	14	21.0	5700	0.58	44.6	1800	Ø10-Ø300	Ø86-Ø290	5002-009
VSC-14	355	112	300	328	127	7	6-M12	132	35	50	15	23.0	4500	-	71	1500	Ø12-Ø350	Ø96-Ø230	5002-009A
VSC-16	405	122	345	375	145	8.5	3-M14	146	42	56	15	23.0	4500	1.75	102	1500	Ø14-Ø400	Ø100-Ø380	5002-010



3-Jaw Powerful Scroll Chuck

Accuracy Type



VSK reversible type

- VSK types chucks have wider utilization range; hard jaws suitable for heavy cutting; optional soft jaws suitable for light and precision cutting.
- Hard jaws could be used as internal jaws and external jaws.
- Gripping accuracy of 0.03mm(0.012inch) T.I.R.
- The body is made of MEEHANITE. It is suitably used for high speed revolution and 3 times more durable than regular chucks.

SPECIFICATIONS

ORDER NO.	Dim											Allowable Handle Torque (kgf.m)	Gripping Force (kgf)	I (kgf.m)	Weight (kgs)	Max. Speed (r.p.m.)	Gripping Range		CODE NO.
	A	B	C	D	E	F	G	H	J	K	L						O.D. Range	I.D. Range	
VSK-4	112	58	80	95	24	4.5	3-M8	47	19	31.5	8	4.5	1200	-	3.45	2500	Ø3-Ø100	Ø35-Ø93	5002-028
VSK-5	132	60	100	115	32	4.5	3-M8	57	24	36	8	6.5	1500	-	5	2500	Ø3-Ø123	Ø43-Ø122	5002-029
VSK-6	165	67	130	147	45	5	3-M10	72	26	39	10	9.0	3300	0.03	9.5	2000	Ø8-Ø160	Ø55-Ø150	5002-030
VSK-7	192	76.5	155	172	58	5	3-M10	82	28	43	11	11.0	3600	0.06	13.8	2000	Ø8-Ø180	Ø62-Ø170	5002-031
VSK-8	200	76.5	160	176	58	5	3-M10	82	28	43	11	11.0	3600	0.07	14.7	2000	Ø8-Ø180	Ø62-Ø170	5002-032
VSK-9	232	84	190	210	70	6	3-M12	96	32	50	12	15.0	3900	0.16	22.1	2000	Ø11-Ø220	Ø70-Ø210	5002-033
VSK-10	273	87	230	250	87	8.5	3-M12	100	35	54.5	12	19.5	4800	0.26	29.5	1800	Ø12-Ø260	Ø80-Ø250	5002-034
VSK-12	310	96	260	285	105	7	3-M12	114	40	56	14	21.0	5700	0.58	41.8	1800	Ø15-Ø300	Ø90-Ø290	5002-035
VSK-14	355	112	300	328	127	7	6-M12	139	45	70.5	15	23.0	4500	-	68	1500	Ø25-Ø350	Ø110-Ø230	5002-035A
VSK-16	405	122	345	375	145	8.5	6-M14	150	50	75	15	23.0	4500	1.72	98	1500	Ø30-Ø470	Ø110-Ø380	5002-037