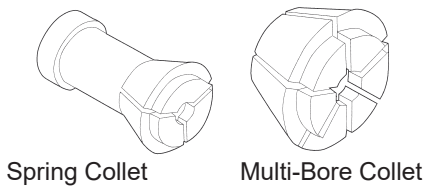


NEW



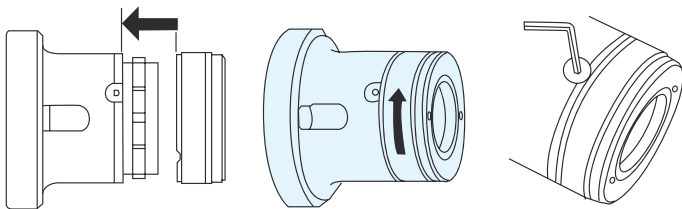
Lathe Collets
Please See E25

Please use DIN6343 collets ————— collet illustration



Spring Collet

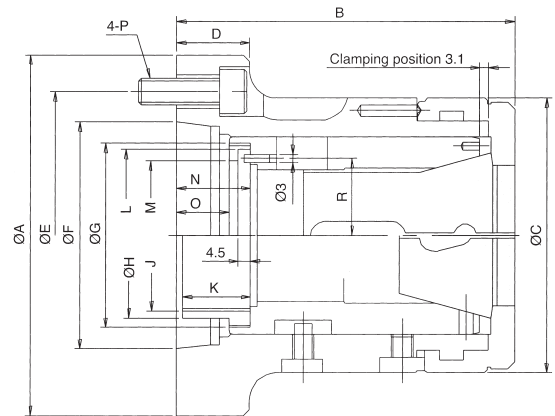
Multi-Bore Collet



Push the cover

Turn the cover

Tighten the cover anti rotation screws



Holding Range

CHUCK NO.	MULTIBORE			SPRING COLLET				
	CAT NO.	○	◇	□	CAT NO.	○	◇	□
CR42	M-673	42	36	30	173E/4728	42	36	30
CR60	M-677	60	52	42	185E/4291	60	52	42

DIMENSIONS

ORDER NO.	A	B	C	D	E	F	G	H	J Max.	K	L	M	N	O	P	R
CR42A5	135	124	100	27	104.78	82.563	M66xP1.5	60	M55xP20	25	62.5	54	27.4	19.4	M10	28
CR42A6	170	124	100	32	133.35	106.375	M66xP1.5	66	M60xP20	25	62.5	54	27.4	19.4	M12	28
CR60A6	170	145	130	27	133.35	106.375	M90xP1.5	67.5	M60xP20	30	83	77	29.9	21.9	M12	39.5

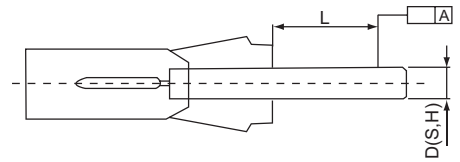
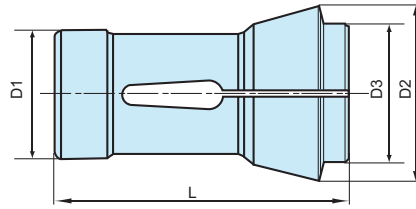
SPECIFICATIONS

ORDER NO.	Diameter of Shantit	Material Diameter (mm)	Collet Travel Distance (mm)	Weight (kgs)	Maximum Bearing KN (kgf)	Maximum Holding Power KN (kgf)	Maximum Speed (r.p.m.)	CODE NO.
CR42A5	A2-5	42	7	6.2	25(2549)	55(5608)	6,000	5003-040
CR42A6	A2-6	42	7	8.2	25(2549)	55(5608)	6,000	5003-041
CR60A6	A2-6	60	7	13	33(3365)	59(6016)	5,000	5003-042

AWL TYPE CHUCK



DIN6343



Test Bar	D (S,H)	L (mm)	A	
			Class 1	Class 2
0.2~1.0		3	0.015	0.015
1.0~1.6		6		0.020
1.6~3.0		10		
3.0~6.0		16		
6.0~10.0		25	0.020	0.030
10.0~18.0		40		
18.0~24.0		50		
24.0~30.0		60	0.030	0.040
30.0~50.0		80		
50.0~60.0		100		

DIN6343

COLLET TYPE	STANDARD NO.	D1 (mm)	D2 (mm)	D3 (mm)	L (mm)	KONUSWINKEL SPINDLE CONE ANGLE	COLLET RANGE(mm)		
							○	⬡	□
C-26	161E	32	45	34	75	15°	Ø3-Ø26	Ø6-Ø22	Ø5-Ø18
C-36	171E	42	55	42	94	15°	Ø36	Ø32	Ø26
C-42	173E	48	60	50	94	15°	Ø3-Ø42	Ø6-Ø36	Ø5-Ø30
C-52	177E	58	70	60	94	15°	Ø52	Ø45	Ø36
C-60	185E	66	84	73	110	15°	Ø3-Ø60	Ø6-Ø50	Ø5-Ø40
C-80	193E	90	107	92	130	15°	Ø3-Ø80	Ø6-Ø70	Ø5-Ø57

CONE SIZE

C80: Hex./Square shape order to make.

ROUND SHAPE / METRIC

METRIC SIZE

C26-DØ ○		C42-DØ ○		C60-DØ ○		C80-DØ ○	
ORDER NO.	CODE NO.	ORDER NO.	CODE NO.	ORDER NO.	CODE NO.	ORDER NO.	CODE NO.
C26-D6	5003-101	C42-D6	5003-131	C60-D8	5003-171	C80-D18	5003-211
C26-D8	5003-102	C42-D8	5003-132	C60-D9	5003-172	C80-D20	5003-212
C26-D9	5003-103	C42-D9	5003-133	C60-D10	5003-173	C80-D25	5003-213
C26-D10	5003-104	C42-D10	5003-134	C60-D11	5003-174	C80-D28	5003-214
C26-D11	5003-105	C42-D11	5003-135	C60-D12	5003-175	C80-D30	5003-215
C26-D12	5003-106	C42-D12	5003-136	C60-D13	5003-176	C80-D32	5003-216
C26-D13	5003-107	C42-D13	5003-137	C60-D14	5003-177	C80-D35	5003-217
C26-D14	5003-108	C42-D14	5003-138	C60-D15	5003-178	C80-D38	5003-218
C26-D15	5003-109	C42-D15	5003-139	C60-D16	5003-179	C80-D40	5003-219
C26-D16	5003-110	C42-D16	5003-140	C60-D17	5003-180	C80-D42	5003-220
C26-D17	5003-111	C42-D17	5003-141	C60-D18	5003-181	C80-D45	5003-221
C26-D18	5003-112	C42-D18	5003-142	C60-D19	5003-182	C80-D48	5003-222
C26-D19	5003-113	C42-D19	5003-143	C60-D20	5003-183	C80-D50	5003-223
C26-D20	5003-114	C42-D20	5003-144	C60-D21	5003-184	C80-D52	5003-224
C26-D21	5003-115	C42-D21	5003-145	C60-D22	5003-185		
C26-D22	5003-116	C42-D22	5003-146	C60-D23	5003-186		
C26-D23	5003-117	C42-D23	5003-147	C60-D24	5003-187		
C26-D24	5003-118	C42-D24	5003-148	C60-D25	5003-188		
C26-D25	5003-119	C42-D25	5003-149	C60-D27	5003-189		
		C42-D27	5003-150	C60-D28	5003-190		
		C42-D28	5003-151	C60-D30	5003-191		
		C42-D30	5003-152	C60-D32	5003-192		
		C42-D32	5003-153	C60-D34	5003-193		
		C42-D34	5003-154	C60-D36	5003-194		
		C42-D36	5003-155	C60-D38	5003-195		
		C42-D38	5003-156	C60-D40	5003-196		
		C42-D40	5003-157	C60-D42	5003-197		
		C42-D42	5003-158	C60-D45	5003-198		
				C60-D47	5003-199		
				C60-D48	5003-200		
				C60-D50	5003-201		

HEX. SHAPE / METRIC		METRIC SIZE			
C26-H		C42-H		C60-H	
ORDER NO.	CODE NO.	ORDER NO.	CODE NO.	ORDER NO.	CODE NO.
C26-H8	5003-241	C42-H8	5003-261	C60-H8	5003-281
C26-H10	5003-242	C42-H10	5003-262	C60-H10	5003-282
C26-H12	5003-243	C42-H12	5003-263	C60-H12	5003-283
C26-H13	5003-244	C42-H13	5003-264	C60-H13	5003-284
C26-H15	5003-245	C42-H15	5003-265	C60-H15	5003-285
C26-H16	5003-246	C42-H16	5003-266	C60-H16	5003-286
C26-H17	5003-247	C42-H17	5003-267	C60-H17	5003-287
C26-H19	5003-248	C42-H19	5003-268	C60-H19	5003-288
C26-H20	5003-249	C42-H20	5003-269	C60-H20	5003-289
C26-H21	5003-250	C42-H21	5003-270	C60-H21	5003-290
		C42-H22	5003-271	C60-H22	5003-291
		C42-H24	5003-272	C60-H24	5003-292
		C42-H25	5003-273	C60-H25	5003-293
		C42-H27	5003-274	C60-H27	5003-294
		C42-H30	5003-275	C60-H30	5003-295

DIN6343

COLLET TYPE	STANDARD NO.
C-26	161E
C-42	173E
C-60	185E
C-80	193E

ROUND SHAPE / INCH		INCH SIZE					
C26-D \varnothing		C42-D \varnothing		C60-D \varnothing		C80-D \varnothing	
ORDER NO.	CODE NO.	ORDER NO.	CODE NO.	ORDER NO.	CODE NO.	ORDER NO.	CODE NO.
C26-D $1/4$ "	5003-301	C42-D $1/4$ "	5003-321	C60-D $3/8$ "	5003-351	C80-D $3/4$ "	5003-381
C26-D $3/8$ "	5003-302	C42-D $3/8$ "	5003-322	C60-D $1/2$ "	5003-352	C80-D $7/8$ "	5003-382
C26-D $1/2$ "	5003-303	C42-D $1/2$ "	5003-323	C60-D $5/8$ "	5003-353	C80-D1"	5003-383
C26-D $5/8$ "	5003-304	C42-D $5/8$ "	5003-324	C60-D $3/4$ "	5003-354	C80-D $1 1/8$ "	5003-384
C26-D $3/4$ "	5003-305	C42-D $3/4$ "	5003-325	C60-D $7/8$ "	5003-355	C80-D $1 1/4$ "	5003-385
C26-D $7/8$ "	5003-306	C42-D $7/8$ "	5003-326	C60-D1"	5003-356	C80-D $1 3/8$ "	5003-386
C26-D1"	5003-307	C42-D1"	5003-327	C60-D $1 1/8$ "	5003-357	C80-D $1 1/2$ "	5003-387
		C42-D $1 1/8$ "	5003-328	C60-D $1 1/4$ "	5003-358	C80-D $1 5/8$ "	5003-388
		C42-D $1 1/4$ "	5003-329	C60-D $1 3/8$ "	5003-359	C80-D $1 3/4$ "	5003-389
		C42-D $1 3/8$ "	5003-330	C60-D $1 1/2$ "	5003-360	C80-D $1 7/8$ "	5003-390
		C42-D $1 1/2$ "	5003-331	C60-D $1 5/8$ "	5003-361	C80-D2"	5003-391
		C42-D $1 5/8$ "	5003-332	C60-D $1 3/4$ "	5003-362	C80-D $2 1/8$ "	5003-392
				C60-D $1 7/8$ "	5003-363	C80-D $2 1/4$ "	5003-393
				C60-D2"	5003-364	C80-D $2 3/8$ "	5003-394
						C80-D $2 1/2$ "	5003-395
						C80-D $2 5/8$ "	5003-396
						C80-D $2 7/8$ "	5003-397
						C80-D3"	5003-398

LATHE COLLET

HEX. SHAPE / INCH		INCH SIZE			
C26-H		C42-H		C60-H	
ORDER NO.	CODE NO.	ORDER NO.	CODE NO.	ORDER NO.	CODE NO.
C26-H $1/4$ "	5003-411	C42-H $3/8$ "	5003-431	C60-H $3/8$ "	5003-451
C26-H $3/8$ "	5003-412	C42-H $1/2$ "	5003-432	C60-H $1/2$ "	5003-452
C26-H $1/2$ "	5003-413	C42-H $5/8$ "	5003-433	C60-H $5/8$ "	5003-453
C26-H $5/8$ "	5003-414	C42-H $3/4$ "	5003-434	C60-H $3/4$ "	5003-454
C26-H $3/4$ "	5003-415	C42-H $7/8$ "	5003-435	C60-H $7/8$ "	5003-455
C26-H $7/8$ "	5003-416	C42-H1"	5003-436	C60-H1"	5003-456
		C42-H $1 1/8$ "	5003-437	C60-H $1 1/8$ "	5003-457
		C42-H $1 1/4$ "	5003-438	C60-H $1 1/4$ "	5003-458
				C60-H $1 3/8$ "	5003-459



SQUARE SHAPE / INCH		INCH SIZE			
C26-S		C42-S		C60-S	
ORDER NO.	CODE NO.	ORDER NO.	CODE NO.	ORDER NO.	CODE NO.
C26-S $1/4$ "	5003-471	C42-S $3/8$ "	5003-491	C60-S $3/8$ "	5003-501
C26-S $3/8$ "	5003-472	C42-S $1/2$ "	5003-492	C60-S $1/2$ "	5003-502
C26-S $1/2$ "	5003-473	C42-S $5/8$ "	5003-493	C60-S $5/8$ "	5003-503
C26-S $5/8$ "	5003-474	C42-S $3/4$ "	5003-494	C60-S $3/4$ "	5003-504
		C42-S $7/8$ "	5003-495	C60-S $7/8$ "	5003-505
				C60-S1"	5003-506
				C60-S $1 1/8$ "	5003-507

