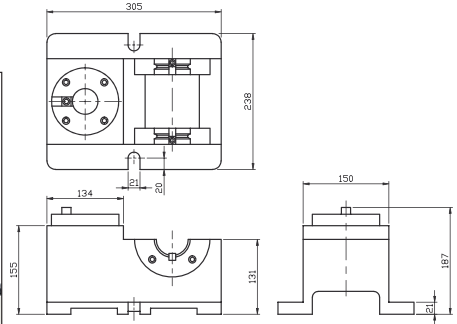




Deluxe Type Tool Setting Stand

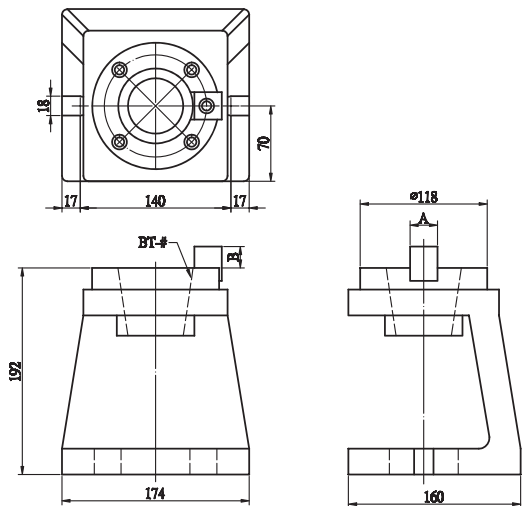


- This tool setting stand is one kind of subsidize tool for helping machine center to work efficiently. To be used fixing the tools on tool holder. It could avoid the method of using draw bar to fix (on machine center). It is safe, and doesn't effect the precision of machine's spindle.
- It's best for using on horizontal or vertical lines, simple & quick operations.
- A multi-function tool, it is changeable, has two kinds of specifications can be used. That is to say, one machine could be used as two sets machines.
- Additional special accessories to make your operating more convenient.
- CAT & SK share same model.

ORDER NO.	SHANK TAPERS		WEIGHT (kgs)	CODE NO.
	TOOL POST	ADAPTER HOLDING		
VTD-1	BT-#40x1	BT-#40x2	22.4	3405-001
VTD-2	BT-#50x1	BT-#50x2	22	3405-002
VTD-3	BT-#50x1	BT-#50x1 BT-#40x1	24	3405-003
VTD-4	BT-#40x1	BT-#50x1 BT-#40x1	24	3405-004
VTD-5	SK-40x1	SK-40x2	26	3405-005
VTD-6	SK-50x1	SK-50x2	24	3405-006
VTD-7	SK-50x1	SK-50x1 SK-40x1	25	3405-007
VTD-8	SK-40x1	SK-50x1 SK-40x1	25	3405-008
VTD-9	BT-30x1	BT-30x2	23	3405-009
VTD-10	SK-30x1	SK-30x2	23	3405-009A



Simple Type Tool Setting Stand

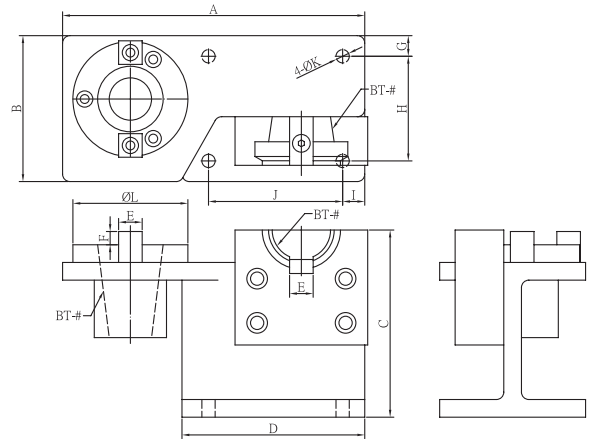


- This tool setting stand is one kind of subsidize tool for helping machine center to work efficiently. To be used fixing the tools on tool holder. It could avoid the method of using draw bar to fix (on machine center). It is safe, and doesn't effect the precision of machine's spindle.
- It is simple structive type. And could fix tooling on the above and hold the pull studs on the below of it. This is the excellent helping tools for simple, rapid and safe.

ORDER NO.	SHANK TAPERS	STD	WEIGHT (kg)	CODE NO.
VTS-BT-30	30	BT ISO NT	11.9	3405-010
VTS-BT-40	40		12.4	3405-011
VTS-BT-50	50		11.9	3405-012
VTS-SK-30	30	CAT DIN 69871A	11.9	3405-013
VTS-SK-40	40		12.4	3405-014
VTS-SK-50	50		11.9	3405-015



Tool Holder Locking Device



ORDER NO.	STD	WEIGHT (KGS)	CODE NO.
VTG-BT30	ISO BT	4.1	3405-020
VTG-BT40		4.2	3405-021
VTG-BT50		11.8	3405-022
VTG-SK30	CAT SK DIN69871A	3.7	3405-023
VTG-SK40		4	3405-024
VTG-SK50		12.3	3405-025

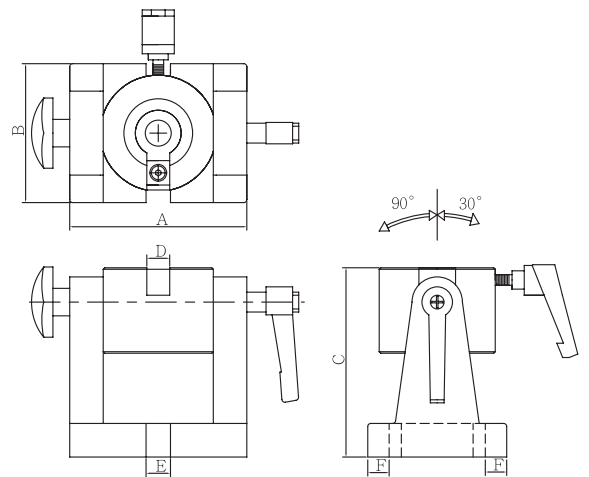
ORDER NO.	A	B	C	D	E	F	G	H	I	J	K	L	CODE NO.
VTG-BT30	205	99	127	124	15	10	16	71	15	91	9	78	3405-020
VTG-BT40	205	99	127	124	16	9	14	71	15	91	9	78	3405-021
VTG-BT50	282	152	203	162	25	16	22	108	25	115	9	115	3405-022

TOOL HOLDER LOCKING



Tool Holder Locking Device

TILTING TYPE



Example Shank Not Included

ORDER NO.	STD	WEIGHT (KGS)	CODE NO.
VTL-BT30	ISO BT	4.2	3405-030
VTL-BT40		4.3	3405-031
VTL-BT50		9.8	3405-032
VTL-SK30	DIN69871A	4	3405-033
VTL-SK40		4	3405-034
VTL-SK50		8	3405-035
VTL-NT30	NT	4.2	3405-036
VTL-NT40		4.3	3405-037
VTL-NT50		9.8	3405-038

ORDER NO.	A	B	C	D	E	F	CODE NO.
VTL-BT30	116	91	126	16	15	14	3405-030
VTL-BT40	117	91	136	16	15	14	3405-031
VTL-BT50	149	121	189	25	15	15	3405-032

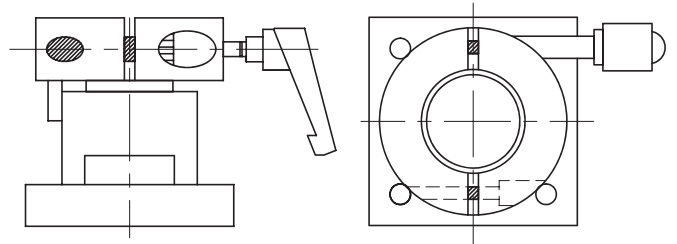


Tool Holder Locking Fixtures



HSK TYPE

NEW



ORDER NO.	STD	WEIGHT (KGS)	CODE NO.
VTL-HSK40	DIN69893 HSK	2.5	3405-046
VTL-HSK50		3.5	3405-047
VTL-HSK63		4.5	3405-048



Round Tool Locking Device

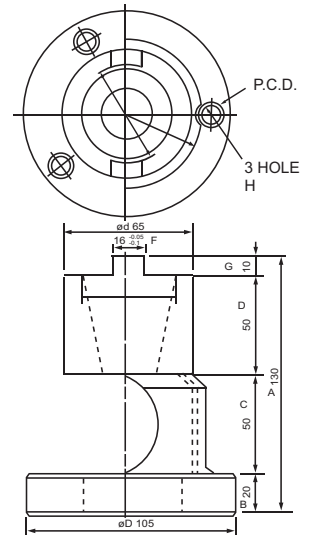
NEW



Example

Feature:

- Light weight & compact design
- Quick setup time
- For tool holder locking
- Space saving



ORDER NO.	SHANK TAPER	ØD	Ød	3HOLE P.C.D.	H	A	B	C	D	E	F	WEIGHT (kg)	CODE NO.
VTO-BT30	30	90	50	70	ø14x9xø9	108	20	48	30	10	16	1.2	3405-190
VTO-BT40	40	105	65	85	ø14x9xø9	130	20	50	50	10	16	2.2	3405-191
VTO-BT50	50	135	95	115	ø14x9xø9	188	24	82	70	12	25.4	5	3405-192



Fast Tool Setting Stand

HSK TYPE

NEW



Example

LEVER FOR CLAMPING & UNCLAMPING

SETTING INSIDE FOR CLAMPING

※MOVEABLE KEY FOR FLEXIBLE PURPOSE FLEXIBLE

ORDER NO.	STD	WEIGHT (kg)	CODE NO.
VTS-HSK63	DIN69893HSK	10.5	3405-193
VTS-HSK100		11.5	3405-194