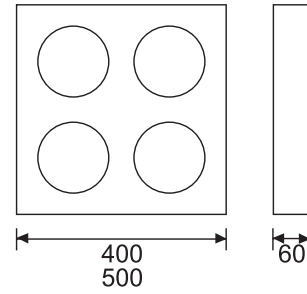


Granite Square Rulers

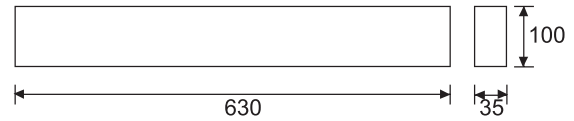


Accuracy:
SQUARENESS 0.002 / 100 mm

Unit: mm

ORDER NO.	SIZE	G.W.(kgs)	CODE NO.
VQR-400	400x400x60	24.8	2021-050
VQR-500	500x500x60	40.2	2021-051

Granite Straight Rulers



Accuracy:
PARALLELISM 0.002 / 100 mm

Unit: mm

ORDER NO.	SIZE	G.W.(kgs)	CODE NO.
VSR-630	630x100x35	8.7	2021-060
VSR-1000	1000x80x50	13.7	2021-061

Granite Triangle Ruler



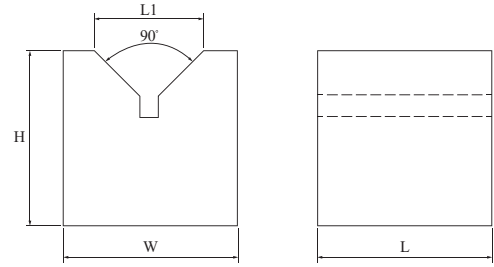
Accuracy:
SQUARENESS 0.002 / 100 mm

mm

ORDER NO.	Size	Thickness	Weight (kgs)	CODE NO.
VGT-300	300x200	30	5.7	2022-020
VGT-400	400x250	30	8.4	2022-021
VGT-600	600x400	63	27.5	2022-022



PAIR



Accuracy:
PARALLELISM 0.005 / 100 mm

ORDER NO.	CAPACITY Ø		DIMENSION				KGS	CODE NO.
	MIN.	MAX.	H	W	L	L1		
VG-63	Ø 4	Ø 65	65	65	65	38	1.7	2022-030
VG-100	Ø 10	Ø 100	100	100	100	62	6.3	2022-031

GRANITE V-BLOCK

Horizontal Leveling Instrument



0.02 / 100 mm

- When the bubble is in the center & touch and with in 2 red line, then the surface is leveled.

ORDER NO.	DIMENSION	Weight (kgs)	CODE NO.
VLI-200A	200x46x46	1.96	2022-043
VLI-300A	300x46x45.90	2.78	2022-044

Precision Square Level



0.02 / 100 mm

- When the bubble is in the center & touch and with in 2 red line, then the surface is leveled.

ORDER NO.	DIMENSION	Weight (kgs)	CODE NO.
VSL-200A	200x200x39.5	4.10	2022-053
VSL-300A	300x300x44.6	8.83	2022-054

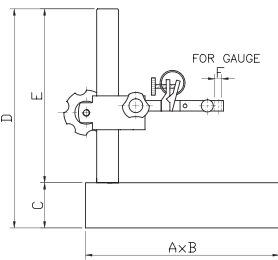


Granite Surface Stand

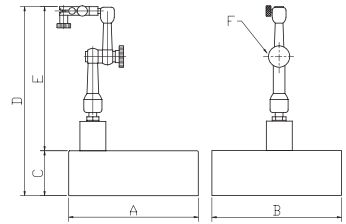
MAX. stroke 60 mm



VH-41,42,43



VH-45,46,47



- THE DIAL GAUGE IS OPTIONAL
- ACCURACY: 0.005/100mm

※ Gauge not included

ORDER NO.	AxB GRANITE PLATE DIEMENSION	C	D	E	F	WEIGHT (kgs)	CODE NO.
VH-41	6" x 6" 150x150 mm	52	252	200	8 mm	6	2022-001A
VH-42	6" x 9" 150x220 mm	52	252	200	8 mm	9	2022-002A
VH-43	9" x 12" 230x300 mm	90	290	200	8 mm	22	2022-003A
VH-45	6" x 6" 150x150 mm	52	185	133	8 mm	6	2022-005
VH-46	6" x 9" 150x220 mm	52	185	133	8 mm	7.9	2022-006
VH-47	9" x 12" 230x300 mm	90	223	133	8 mm	19.1	2022-007



Tester Arm Base

FOR SURFACE PLATE

NEW



For smooth moving on granite / cast iron test surface plate.

- Measuring aid
- Equipped with flexible arm
- For smooth measuring on granite / cast iron surface plate!
- Without dial gauge
- Base fine adjustment
- Bottom high precision finish : 0.02mm tolerance
- Material : Steel
- Single-hand operation
- Great for side measuring
- Reliable 1 knob locking mechanism

2-STEP ROUND SHAPE BASES IS EASY TO MOVE WITH 1 HAND.

EXAMPLE



※ Gauge not included



※ WITHOUT DIAL GAUGE

mm

ORDER NO.	BASE (Ø)	MAIN ROD O.D x L	SUB ROD O.L x L	WEIGHT (kgs)	CODE NO.
VTB-120	120	Ø25 x 125	Ø25 x 125	2.65	2022-015