



Permanent-Electro Magnetic Chuck



Suitable for Milling

Mag. Power 1000 kgs / 100 cm²

NEW



5 SIDES MACHINING

CONTROLLER TYPE:

- ※ C1 for VPE-2540, 2560, 2580, 3030, 3040, 3060, 4040
44x40x33cm WEIGHT Kgs: 11Kgs
- ※ C2 for VPE-25100, 3080, 3090, 4060, 4080, 5060
44x40x33cm WEIGHT Kgs: 11Kgs
- ※ C4 for VPE-40100, 5080, 50100, 60100
52x40x40cm WEIGHT Kgs: 12Kgs

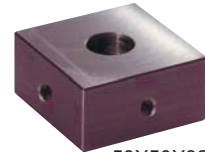


SETS CONTROLLER INCLUDED

optional:



VSB- 49X48X30 mm
SPRING BLOCK



VTJ- 50X50X32.5 mm
MAGNETIC TRANSISTING
SOFT JAW

| ORDER NO. | ACCESSORIES | SIZE | WEIGHT KGS | CODE NO. |
|-----------|-------------------------------|---------------|------------|----------|
| VSB- | SPRING BLOCK | 49x48x30 mm | 0.5 | 2033-450 |
| VTJ- | MAGNETIC TRANSISTING SOFT JAW | 50x50x32.5 mm | 0.59 | 2033-451 |

FEATURES

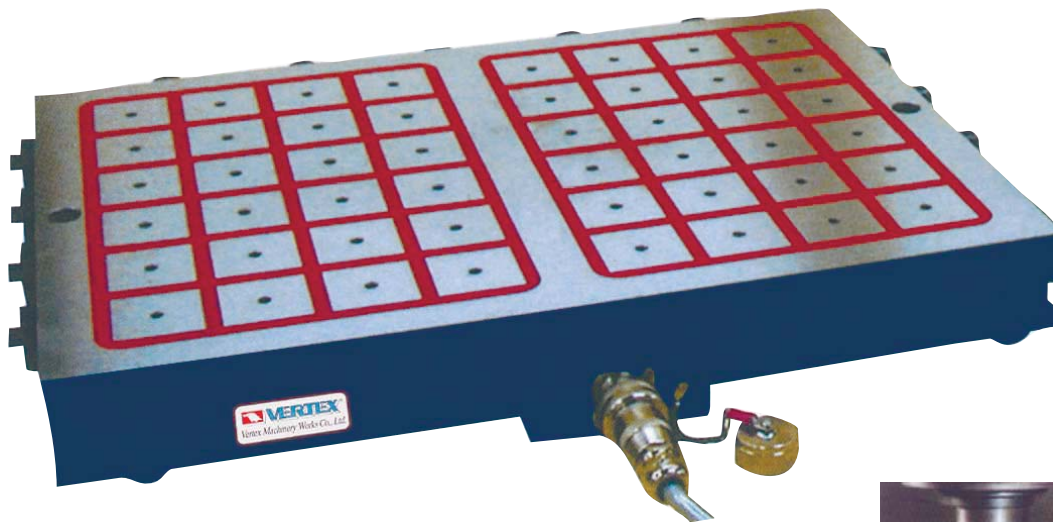
- Ensure higher magnetic and mechanical performances, as well as absolute reliability.
- Owing to no power supply to keep the magnetic chuck ON, it could be used for long time and never get temperature to affect the accuracy of workpiece. "COLD" device, not subject to internal wear or deformation resulting from moving internal parts.
- Easy and convenient to clamp a workpiece, shortens clamping time.
- Most suitable for heavy duty machining on medium, large or even rough components.
- Easily integrated with Pallet Change of Horizontal Machining Center and FMS System the Magnetic Chucks will be as geometrically stable as the table itself.
- For the most powerful machine tools available. Systems are switched ON or OFF with simple electrical pulse. A variable output from 20%-100% is controlled from the operator push button unit.
- Entirely independent of external power supply when holding work pieces. There is no risk, when power fails.
- 2 seconds control for power ON & OFF. No electric Power Supply required to keep the magnetic chuck ON. Safety in case of power failure.
- 10mm MIN. Thin workpiece & MIN. 4 block magnetic pole for workpiece.
- Every work piece need 3 transisting soft jaw to stabilize holding power.
- Spring block has 2.5mm displacement up & down.



Permanent-Electro Magnetic Chuck



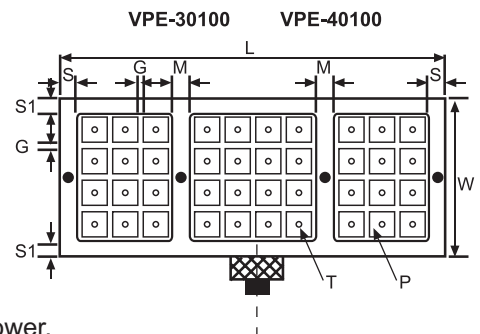
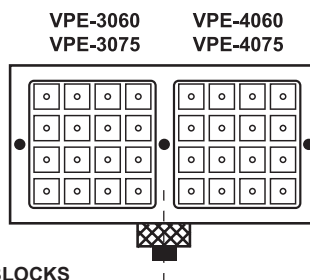
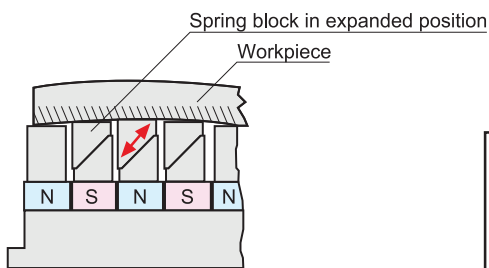
Suitable for Milling



MAGNETIC PLATE

STRONG CLAMPING FORCE, FAST SETTING, HIGH SAFETY

※ Recommend voltage : 380V 1PH



MAGNETIC FORCE 1000 KGS / 100 cm²

MAGNETIC FORCE 1000 KGS / 100 CM² / 4 SQUARE BLOCKS

※ Item / workpiece must cover at least 3 - 4 blocks to have enough holding power.

| ORDER NO. | DIMENSION | | | | | | | PITCH G | POLE P | No. of POLE | VOLTAGE | AMP | CHUCK N.W | CONTROLLER | | CODE NO. |
|-----------|-----------|-----|----|-----|-----------|----|-------|---------|--------|----------------|---------|-----------|-----------|------------|----------|----------|
| | W | L | S | S1 | M | T | HIGHT | | | | | | | TYPE | N.W. | |
| VPE-2540 | 240 | 430 | 30 | 25 | -- | M8 | 60 | 10 | 50X50 | AC-380V 1PH | 18 | 50 | C1 | 10 | 2033-030 | |
| VPE-2560 | 240 | 590 | | | 30 | | | | | | 24 | 2033-031 | | | | |
| VPE-2580 | 240 | 800 | | | 30 | | | | | | 30 | 2033-032 | | | | |
| VPE-25100 | 240 | 990 | | | 30 | | | | | | 42 | 2033-033 | | | | |
| VPE-3030 | 300 | 310 | | | -- | | | | | | 16 | 2033-048 | | | | |
| VPE-3040 | 300 | 430 | | | -- | | | | | | 24 | 2033-049 | | | | |
| VPE-3060 | 300 | 590 | | | 30 | | | | | | 32 | 2033-050 | | | | |
| VPE-3080 | 300 | 810 | | | 30 | | | | | | 44 | 2033-051 | | | | |
| VPE-3090 | 300 | 870 | | | 30 | | | | | | 48 | 2033-051A | | | | |
| VPE-30100 | 300 | 990 | | | 30 | | | | | | 56 | 2033-052 | | | | |
| VPE-4040 | 420 | 430 | | | -- | | | | | | 36 | 2033-052A | | | | |
| VPE-4060 | 420 | 590 | | | 30 | | | | | | 48 | 2033-053 | | | | |
| VPE-4080 | 420 | 810 | | | 30 | | | | | | 66 | 2033-054 | | | | |
| VPE-40100 | 420 | 990 | | | 30 | | | | | | 84 | 2033-055 | | | | |
| VPE-5060 | 480 | 590 | | | 30 | | | | | | 56 | 2033-060 | | | | |
| VPE-5080 | 480 | 800 | | | 30 | | | | | | 70 | 2033-061 | | | | |
| VPE-50100 | 480 | 990 | 30 | 98 | 2033-062 | | | | | | | | | | | |
| VPE-60100 | 600 | 990 | 30 | 126 | 2033-063A | | | | | | | | | | | |