

CAM TYPE

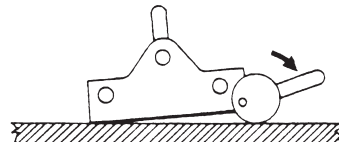
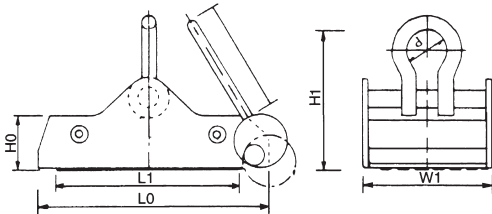
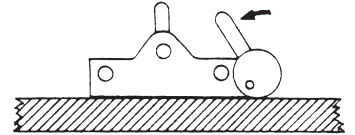


FEATURES

- Normal operation is not influenced on power off or system breakdown, as there is permanent magnet.
- Cam mechanism, easy operation.
- Ground surface of workpiece may be attracted to be scrap occasionally, please be careful.

LOADING

- Take the magnetic table on the workpiece, and move it at the vertical position.



UNLOADING

- Move the level at the horizontal position, the workpiece will be separated.

- Never operate over human's head.

ORDER NO.	CAPACITY	W1	L1	L0	H0	H1	d	l	NET WEIGHT (KGS)	CODE NO.
VGP-100	1000kg	204	298	366	65	125	50	135	25.8	2018-040
VGP-200	2000kg	330	380	445		130			46.8	2018-041

Magnetic Holder

HANDLE TYPE



VML-80



VML-140

FEATURES

Work is held and released very smoothly.

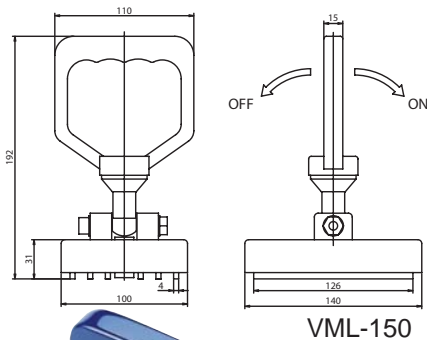
- Most suitable to move materials or semi-finished products such as black steel plate, flat iron and other materials etc.

HOLDING POWER

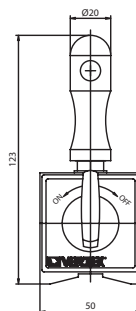
It depends on the attractive face, quality and thickness of material and clearance between the material and magnet.

MAXIMUM HOLDING POWER

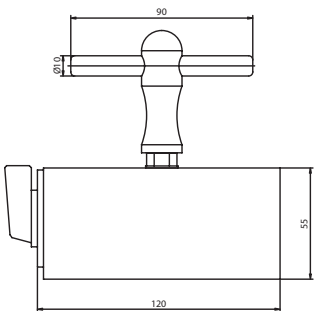
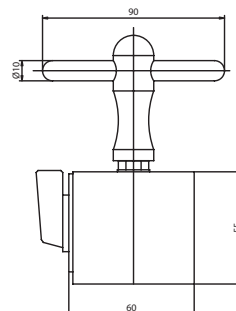
Workpiece must be thick enough and the surface must be free of dust. magnetic attraction is best and with low carbon-soft steels.



VML-150

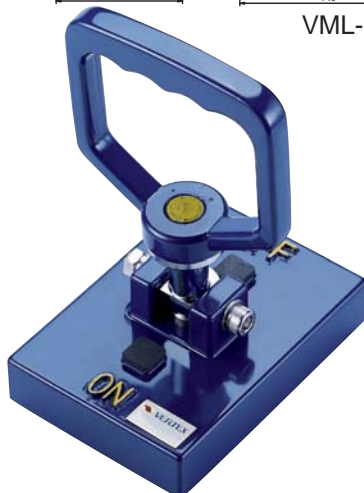


VML-80



VML-140

Unit:mm



VML-150

ORDER NO.	CAPACITY	L	W	H	N.W (KGS)	CODE NO.
VML-80	80kgf	60	50	55	1.23	2018-054
VML-140	140kgf	120	50	55	2.2	2018-055
VML-130	130kgf	120	50	55	1.9	2018-053
VML-150	150kgf	140	100	192	2.5	2018-056

