



# Magnetic Transisting Block



VCP-1



- VCP-1 Chuck Parallels  
100x50x25 mm  
3<sup>15</sup>/<sub>16</sub>"x2"x1" Matched pair.
- VCP-2 Chuck Blocks  
49.5x58x45.5 mm  
1<sup>31</sup>/<sub>32</sub>"x2<sup>5</sup>/<sub>16</sub>"x1<sup>13</sup>/<sub>16</sub>" Matched pair.
- VCP-3 Chuck Block  
109x58x46 mm  
4<sup>3</sup>/<sub>8</sub>"x2<sup>3</sup>/<sub>8</sub>"x1<sup>7</sup>/<sub>8</sub>"single
- VCP-4 Chuck Block  
Each one of VCP-1 & VCP-2

- The V-Blocks and Parallels transfer the magnetism from permanent magnetic chucks. The steel used in all V-Blocks and Parallels is selected for the highest magnetic transfer and is cast integrally with aluminum.

ORDER NO.	WEIGHT KGS	CODE NO.
VCP-1	1.3	2015-401
VCP-2	1.2	2015-402
VCP-3	1.4	2015-403
VCP-4	2.5	2015-404



# Magnetic Transisting Block Set

ORDER NO.VCP-6 CODE NO.2015-410  
WEIGHT:4.2 kgs



Non-magnetic laminated plates and blocks are extras to increase the versatility of chucks. These plates and blocks offer excellent guidance of the magnetic force, and can be used in combination with chucks as 'extensions' for the clamping of workpieces of complex shapes.

### BOXED SET

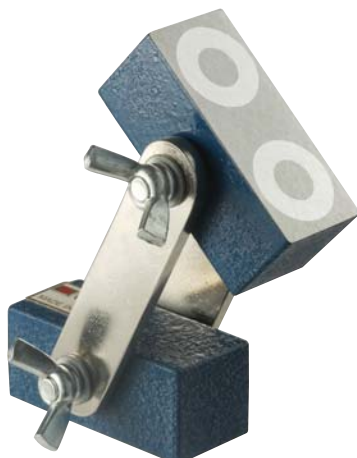
Comprises a selected set of 4 pairs of blocks

NO. of Blocks	STYLE	LxHxWxPCS	USED MODEL
1Pair		60x35x15x2	VCP-0
2Pair		100x50x25x2	VCP-1
1Pair		49.5x58x45.5	VCP-2



# Magnetic Adjustable Link

ORDER NO.VCP-5 CODE NO.2015-420  
WEIGHT:0.8 kg



- Each block 2"x1"x1". Length overall: 4<sup>1</sup>/<sub>8</sub>". width over all 2<sup>1</sup>/<sub>8</sub>".
- For Holding and welding.
- Magnetic blocks can be set at any angle by adjustment and locking of the wing nut. When used in multiples, a number of sheets can be held in complicated arrangement.
- Compact in size for holding work in confined spaces.