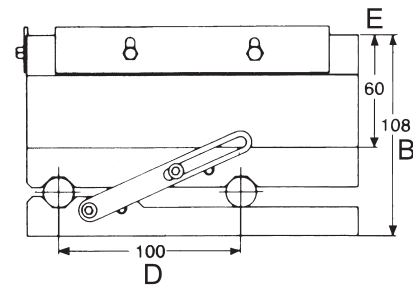
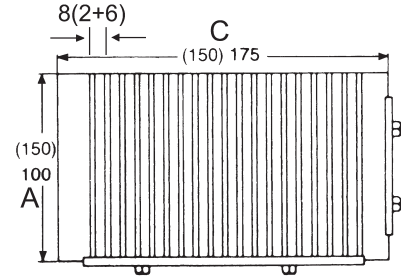


Magnetic Sine Plate



650 GAUSS

MAGNETIC SINE PLATES with a permanent magnetic, never lose its strong power by press down a screw based on the plate and regain the original after work.



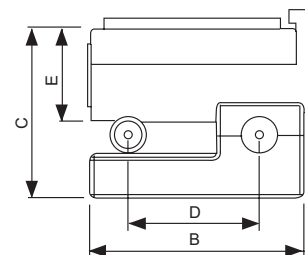
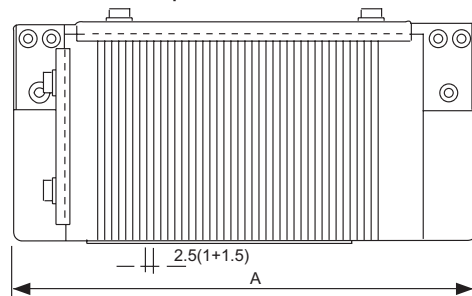
MAGNETIC PLATE

ORDER NO.	A	B	C	D	E	ANGLE	N.W (kgs)	CODE NO.
V-47M	100	108	175	100	60	0°~45°	11.3	2015-020
V-66M	150	108	150	100	60	0°~45°	15.6	2015-021
V-612M	150	108	300	100	60	0°~45°	27	2015-022

Magnetic Sine Plate With Fine Pole

700 GAUSS

Permanent magnetic chuck. Removable handle for positive on/off control, side rails, end rails all included. All have 200 minute angle steps with 0.005 mm(0.0002") tolerance in squareness, parallelism and roll center distances. The chuck of pole is 1+1.5



ORDER NO.	A	B	C	D	E	P	ANGLE	N.W (kgs)	CODE NO.
V-47MF	225	102	87	75	47	2.5 (1+1.5)	0°~46°	13.1	2015-030
V-66MF	200	152	87	100	47			16.5	2015-031
V-612MF	366	152	87	100	47			30.3	2015-032

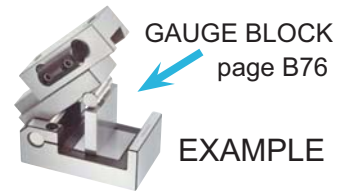


Adjustable Sine Plate With Fine Pole Magnetic Chuck

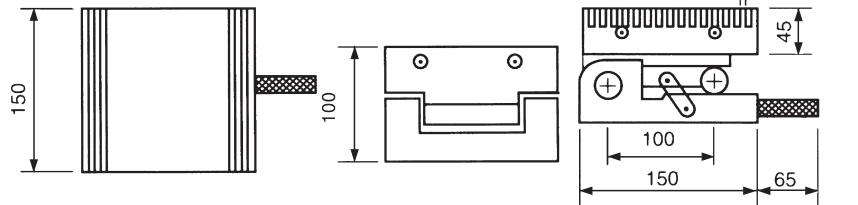


700 GAUSS

ORDER NO.V-66SA CODE NO.2015-050
WEIGHT:17.9 kgs



The sine plate with magnetic chuck is with high accuracy and stability. From 0° to 60° can be used for angle, the precision is within 0.003 mm.



Double Way Sine Plate With Permanent Magnetic Chuck

690 GAUSS

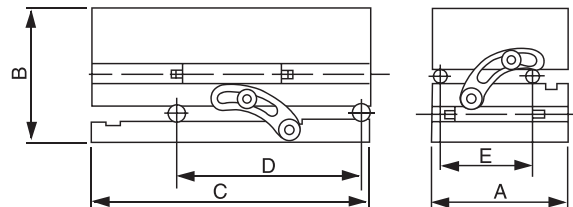


FEATURES:

- Double way sine plate, can be use to grind two way angle at same time.
- Constructed of hardened alloy tool steel.
- Precise angle setting is obtained with gauge block.
- This device provides positive locking at any angle without distortion.
- A positive locking device is mounted on the base.

Unit:mm

ORDER NO.	A	B	C	D	E	P	ANGLE	N.W (kgs)	CODE NO.
V-47MS	100	142	175	100	75	1+3	0°~60°	15.2	2015-060
V-66MS	150	142	150	100	100			18.1	2015-061
V-612MS	150	142	300	200	100			34.7	2015-062



Double Way Sine Plate With Fine Pole Magnetic Chuck

700 GAUSS



FEATURES:

- Double way sine plate, can be grind two way angle at same time.
- Special feature with micropitch magnetic chuck, can fix tiny parts firmly on the chuck.
- Constructed of hardened alloy tool steel.
- Precise angle setting is obtained with gauge block.
- This device provides positive locking at any angle without distortion.
- A positive locking device is mounted on the base.

Unit:mm

ORDER NO.	A	B	C	D	E	P	ANGLE	N.W (kgs)	CODE NO.
V-47MSF	100	122	175	100	75	2.5 (1+1.5)	0°~60°	14.9	2015-070
V-66MSF	150	122	150	100	100			19.8	2015-071
V-612MSF	150	122	300	200	100			35	2015-072

