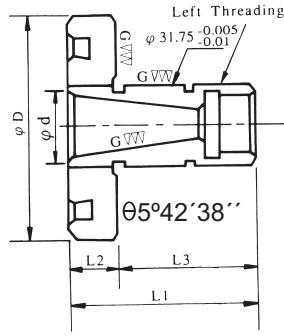


# Grinding Wheel Flange



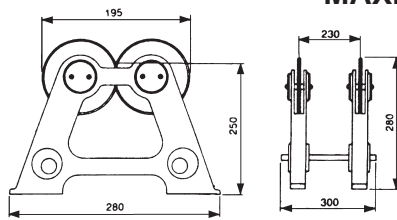
Unit: mm

ORDER NO.	ØD	Ød	L1	L2	L3	Brand Mark	WEIGHT (kg)	CODE NO.
FKT-250	78	25.7+0 -0.05	40	13	27	KENT PROTH	0.8	2013-010
FTA-350	75	25.4+0 -0.05	40	13	34	TA TUNG	1	2013-011

# Wheel Balancing Stand

ORDER NO. WBS-300 CODE NO. 2014-001

WEIGHT: 12.5 kgs



MAX. WHEEL DIAMETER ALLOWED Ø 500mm

The stand is specifically designed to improve accuracy and longer life for grinding. It is finished with cast iron and fine through hardened to HRC 55°.

# Level Balancing Stand

ORDER NO. LBS-100

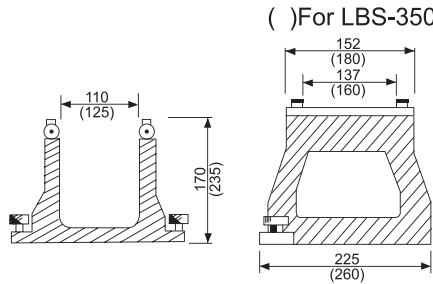
CODE NO. 2014-010

WEIGHT: 8.8 kgs

ORDER NO. LBS-350

CODE NO. 2014-011

WEIGHT: 15.1 kgs



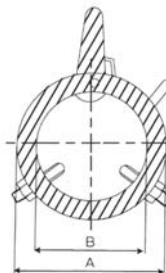
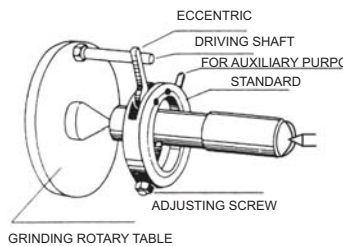
( ) For LBS-350

This machine encloses minute leveling instrument.

The adjustment of horizontal enable rapidly and accurately.

MAX. WHEEL DIAMETER ALLOWED Ø200 mm, Ø350 mm

# Driving Carrier



ORDER NO	CAPACITY	A	B	WEIGHT (kg)	CODE NO.
VDC-13	Ø6~Ø14	36	18	0.1	2014-020
VDC-22	Ø13~Ø24	48	28	0.2	2014-021
VDC-30	Ø20~Ø33	58	38	0.2	2014-022
VDC-40	Ø31~Ø42	68	48	0.2	2014-023
VDC-50	Ø36~Ø50	78	58	0.3	2014-024
VDC-60	Ø40~Ø62	89	68	0.3	2014-025
VDC-80	Ø60~Ø80	119	88	0.6	2014-026
VDC-100	Ø80~Ø100	140	109	0.7	2014-027

## FEATURES:

- SUITABLE FOR GRINDING OF SHAFTS.
- EASY ATTACH AND DETACH BY ONE HAND.