

Hardened Steel Square



Hardness : HRC50°

Squares have accurate right angles both inside and outside. Made from a single piece of fully tool steel. Beams and blades are ground and accurately lapped for straightness and parallelism. Blades are beveled on both edges of each side. Beam is grooved at inner corner for clearance of burr and dirt. All squares are fully hardened . Packed in individual cartons. Accuracy 0.02mm.

※ Not for LAB

ORDER NO.	L x H x thick	NEW WEIGHT (KGS)	CODE NO.
SS-304	100X75X8MM	0.3	2006-050
SS-306	100X150X8MM	0.6	2006-051
SS-308	130X200X8MM	0.8	2006-052
SS-310	250X160X10MM	1.4	2006-053
SS-312	300X200X12MM	2.2	2006-054

SQUARE

Square

Alloysteel Grounded HRC50° ± 2

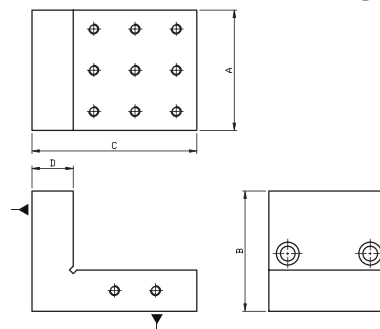


※ Not for LAB

ORDER NO.	LxHxthick	ACCURACY	WEIGHT(kg)	CODE.NO.
FS-204	100x75x6mm	0.02mm	0.2	2006-055
FS-206	150x100x6mm		0.3	2006-056
FS-208	200x130x6mm		0.5	2006-057

Precision Steel Angle Plate

HIGH PRECISION TYPE



MATERIAL : YK30 ALLOY STEEL
 ACCURACY : 0.005/100MM
 HARDEN TREATMENT UP TO HRC 58°
 ※ Not for LAB

ORDER NO.	A	B	C	D	N.W (KGS)	CODE NO.
VRS-33	3"	3"	4"	1"	2.2	2006-060
VRS-44	75	75	100	25	3.7	2006-061
VRS-46	4"	4"	6"	1"	4.5	2006-062
VRS-85	100	100	150	25	14.3	2006-063
VRS-1206	8"	200	200	40	32.3	2006-064
	12"	6"	12"	2"		
	300	150	300	50		