

Free Angle Table



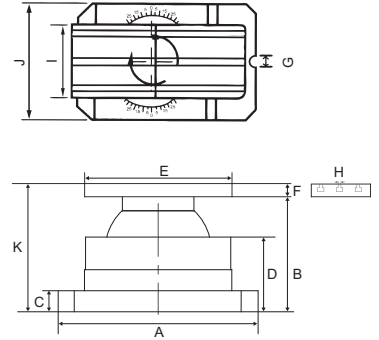
NEW



FOR CLAMPING

Features:

- Quick setting
- Operating is very quick and easy, can increase so much working efficiency than you can image.
- 360° Rotation, Tilting 30°
- For non-normal angle setting.
- Its swivelling and tilting features with chuck clamping make this unit for round & square, angular drilling machining on various machine tools or for bench work table.
- Plate is precisely ground.
- For clamping tool vise & many other way of clamping.

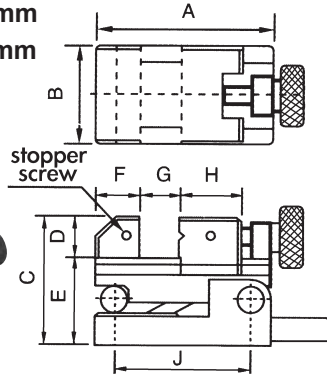


ORDER NO.	A	B	C	D	Table size		F	G	H	J	K	G.W (kgs)	CODE NO.
					E	I							
VAV-1020	140	120	20	72	200	100	34	17	12	140	153	15	2003-120
VAV-1325	140	120	20	72	250	126	34	17	12	140	153	17	2003-121

Precision Sine Vise

HARDNESS HRC 60°, SKS3
 PARALLELISM 0.003 / 100 mm
 SQUARENESS 0.005 / 100 mm

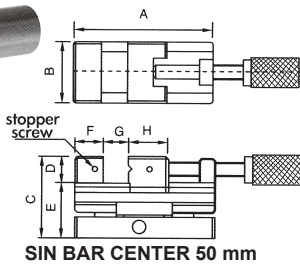
THE CLAMP HANDLE IS PLACED UNDER WORK PIECE.



ORDER NO.	CODE NO.
SVC-100	2003-090

	Unit:mm
A	130
B	70
C	93
D	30
E	63
F	33
G	45
H	45
I	M5
J	100
Max.angle	46°
Weight(kgs)	5.5

Precision Sine Vise

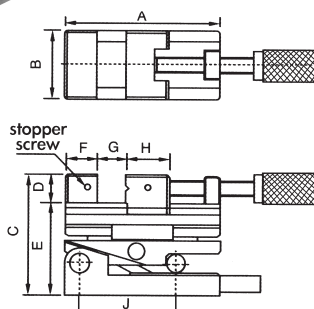


HARDNESS HRC 60°, SKS3
 PARALLELISM 0.003 / 100 mm
 SQUARENESS 0.005 / 100 mm

ORDER NO.	CODE NO.
SVL-50	2003-100

	Unit:mm
A	160
B	73
C	93
D	30
E	63
F	33
G	80
H	45
I	M5
Max.angle	46°
Weight(kgs)	6.6

Two Way Vise



HARDNESS HRC 60°, SKS3
 PARALLELISM 0.003 / 100 mm
 SQUARENESS 0.005 / 100 mm

ORDER NO.	CODE NO.
SVS-100	2003-110

	2 WAYS Unit:mm
A	160
B	73
C	124
D	30
E	94
F	33
G	80
H	45
I	M5
J	100
Max.angle	46°
Weight(kgs)	8.3