



Universal Cutter Grinder



ORDER NO.U2 CODE NO.1022-001



For grinding HSS and carbide engraving cutter as well as single lip or multiple lip cutters of various shapes such as radiused cutters or negative taper angle of cutters. The universal index head is provided at 24 positions so that any particular angle or shape can be obtained, free 3600 or 100 rotation is allowed for grinding End Mills. Twist Drill. Lathe Tools, only replace the attachment to the index head without any complex setup.

※Please confirm voltage & phase when order.

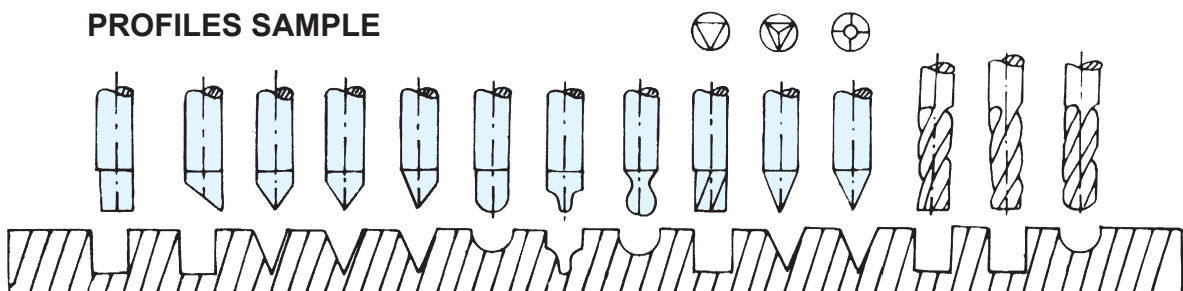
Technical Data

Max. Collet capacity Ø18mm
Max. Grinding dia. Ø25mm
Taper angle 0°-180°
Relief angle 0°-45°
Negative angle 0°-26°
Grinding spindle 3600 r.p.m.
Cup grinding wheel 100x50x20mm
Motor 1/3Hp 220V50/60Hz, please notify volt & phase
Net weight 45kgs
G.W.: 58kgs
Machine dimensions (LxWxH) 45x40x35cm
Packing Dimensions (LxWxH) 55x45x47cm

Standard Accessory Included

- Wheel dresser with diamond..... 1pc
- Wheel flange (mounted)..... 1pc
- Grinding wheel (stone)..... 1pc (U2-G)
- Collet Ø4, 6, 8, 10 12mm..... 5pc
- Aligning finger..... 1pc
- Drive belt (U2-B)..... 1pc (U2-B)
- Lock pin..... 1pc
- Tools..... 1set

ENGRAVING AND MILLING CUTTER PROFILES SAMPLE





Optional Accessory

- Twist drill grinding attachment U2-T
- END mill grinding attachment U2-E
- Lathe tool grinding attachment U2-L
- Grinding wheel balancing stand LBS-100 CODE NO. 2014-010
- Diamond grinding wheel U2-D
- Resinoid Diamond & CBN Wheels U2-R
- Collect (extra 1, 2, 2.5, 3, 5, 7, 9, 16, 18, 20, 25mm and 1/8", 3/16", 1/4", 5/16", 3/8", 1/2", 5/8"). Detail specification & ORDER No. shown on page U2 collet.

ORDER NO.	CODE NO.
U2-E	1022-010
U2-T	1022-011
U2-L	1022-012
U2-D #100	1022-013
U2-B BELT GREEN	1022-014
U2-B-R BELT RED	1022-018
U2-G WHEEL	1022-016
U2-R #200	1022-017
U2-R-1 #400	1022-017-1
VTC-20	3405-221
U2-COLLET	VE-U2-□

END mill grinding attachment
CODE NO. 1022-010 U2-E
WEIGHT: 2kgs



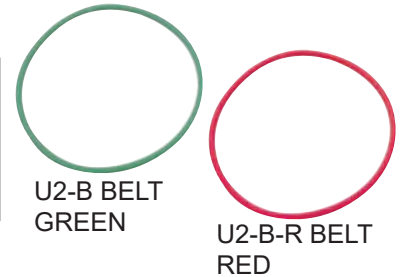
Twist drill grinding attachment
ORDER NO. U2-T CODE NO. 1022-011
WEIGHT: 0.9 kg



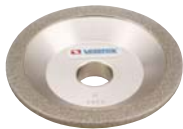
Lathe tool grinding attachment
ORDER NO. U2-L
CODE NO. 1022-012
WEIGHT: 0.9 kg



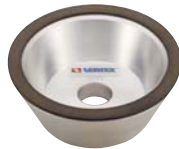
BELT
ORDER NO. U2-B BELT
CODE NO. 1022-014
ORDER NO. U2-B-R BELT
CODE NO. 1022-018



DIAMOND GRINDING WHEEL



U2-D
diamond
grinding wheel



U2-R
Resinoid Diamond
& CBN Wheels

U2 COLLET
Please see page C41

ORDER NO.	SIZE	GRAIN	WEIGHT (kgs)	CODE NO.
U2-D	100Dx10Wx5Ux20Hx22T	#100	0.7	1022-013
U2-R	100Dx8Wx2Xx20H	#200	0.5	1022-017
U2-R-1	100Dx8Wx2Xx20H	#400		1022-017-1



● Tool cabinet stand **VTC-20**,
440 x 340 x 800 mm G.W.: 27.71 kgs
CODE NO. **3405-221**

● ORDER NO. SHOWN ON PAGE C137



VTC-20



EXAMPLE



ORDER NO.	SIZE Ø
VE-U2-□	Ø1, 2, 3, 4, 5, 6, 7, 8, 9, 10, 11, 12, 13, 14, 15, 16, 18, 20, 25 mm

U2 COLLET