



# Universal Jaws With Soft Stopper

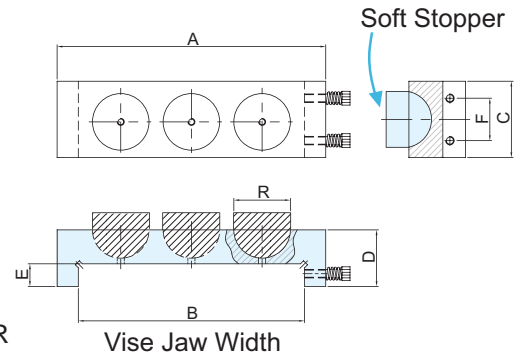


SOFT JAW

NEW



SOFT STOPPER



- The soft stopper can for cutting short, cutting shape, cutting taper.....etc.
- Semi-sphere ball enables down press force.
- For irregular workpiece.
- Easy setting, put on the moving jaw. B is vise jaw width.



ORDER NO.	A	B	C	D	R	WEIGHT kgs	CODE NO.
VWSJ-R100	145	100-110mm	49	38	40		1002-174
VWSJ-R130	175	125-140mm	49	39	40		1002-175
VWSJ-R160	190	150-160mm	54	40	40		1002-176
VWSJ-R200	245	200-210mm	76	42	40		1002-177



# Universal Vise Jaws With Work Stopper



For Fixed On The Vise Jaw

- 4 FOR THE JAW WIDTH 100-110mm
- 5 FOR THE JAW WIDTH 125-140mm
- 6 FOR THE JAW WIDTH 150-160mm
- 8 FOR THE JAW WIDTH 200-210mm

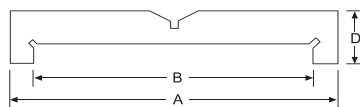
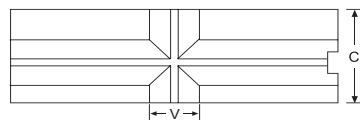
### ORDER NO.

VWSJ-□——VISE JAW SIZE

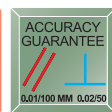
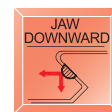
Extension clamping capacity:  
vise jaw width 30-45mm  
vise jaw height 7-15mm

### ORDER NO. VWSJ-4, 5, 6, 8

- Can be fixed on any vise jaw by the two screws on the side.
- One jaw in multiple- function features.
- V-type jaw can fix round workpiece at horizontal and vertical position.
- Can be performed as work stopper.
- Quick, save your time.



V CLAMPING CAPACITY	
HORIZONTAL V	VERTICAL V
Ø50	Ø60
Ø50	Ø60
Ø60	Ø60
Ø80	Ø80



ORDER NO.	A	B	C	D	V	WEIGHT kgs	CODE NO.
VWSJ-4	145	110	49	38	32	1.6	1002-170
VWSJ-5	175	140	49	39	32	1.7	1002-171
VWSJ-6	190	160	53	40	32	2	1002-172
VWSJ-8	245	210	76	42	32	4.2	1002-173