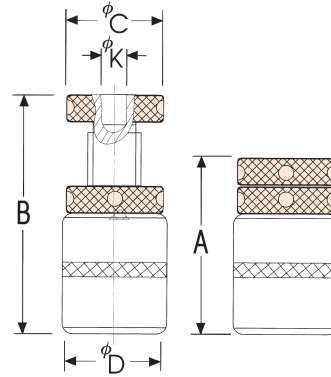




Thread Rod Jack With Magnet VERTEX®



- Cross type fixture gives best positioning.
- Built-in magnets designed, easy to clean chips.
- Height adjuster



SCREW JACK

ORDER NO.	A	B	C	D	K	K.G.	CODE NO.
VSJM-50	42	47	35	40	11.5	0.4	1014-010
VSJM-70	51	65	35	40	11.5	0.5	1014-011
VSJM-85	67	87	40	45	11.5	0.7	1014-012
VSJM-110	86	116	40	45	11.5	0.8	1014-013
VSJM-165	110	170	45	50	11.5	1.4	1014-014



Thread Rod Jack Set

NEW



- SUITABLE FOR IRREGULAR WORKPIECE. RAPID SETTING & FIXED.
- WORK CLAMPING & SUPPORT.
- HEIGHT ADJUSTER

PADS:



6 PADS For different work piece shape

ORDER NO.	SIZE	CODE NO.
VSJ-1A	Ø25xØ11x10mm	1014-030
VSJ-2A		1014-031
VSJ-3A		1014-032
VSJ-4A		1014-033
VSJ-5A		1014-034
VSJ-6A		1014-035

ORDER NO.	SET INCLUDING		WEIGHT K.G.	CODE NO.
	JACKS	PARTS EACH ONE		
VSJ-A	VSJ-70x2 VSJ-150x2	VSJ-1A, VSJ-2A, VSJ-3A VSJ-4A, VSJ-5A, VSJ-6A	4.0	1014-020
VSJ-B	VSJ-150x2 VSJ-250x2	VSJ-1A, VSJ-2A, VSJ-3A VSJ-4A, VSJ-5A, VSJ-6A	7.5	1014-021