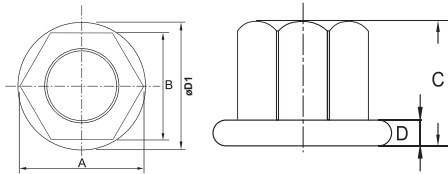


Flange Nut

DIN 6331 STANDARD



NEW



By machine process.
With turned & milled
Heat treated and oxide fines
HRC 34°



Metric Size

| ORDER NO. | Thread | A | B | C | D | ØD1 | Weight (kg) | CODE NO. |
|-----------|------------|-------|----|----|-----|-----|-------------|----------|
| CFN1017 | M10 X 1.5 | 18.90 | 17 | 15 | 4 | 22 | 0.02 | 1003-160 |
| CFN1219 | M12 X 1.75 | 21.10 | 19 | 18 | 4 | 25 | 0.03 | 1003-161 |
| CFN1422 | M14 X 2.0 | 24.50 | 22 | 21 | 4.5 | 28 | 0.04 | 1003-162 |
| CFN1624 | M16 X 2.0 | 26.80 | 24 | 24 | 5 | 31 | 0.06 | 1003-163 |
| CFN1827 | M18 X 2.5 | 30.10 | 27 | 27 | 5 | 34 | 0.09 | 1003-164 |

C-Clamp Cast Steel

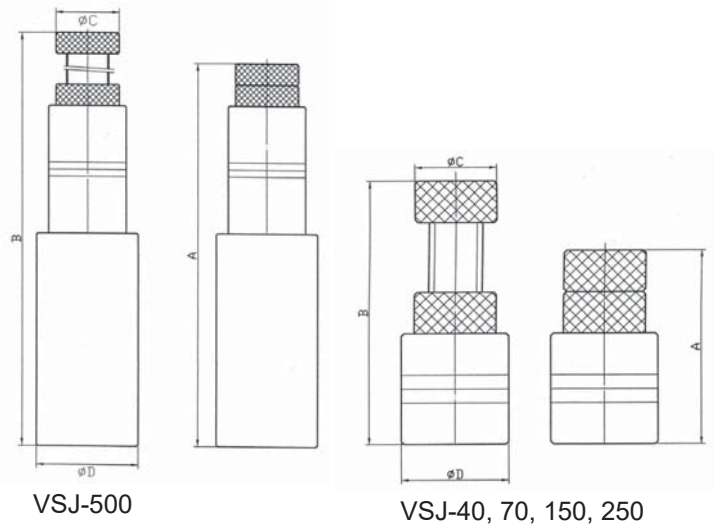
NEW



| ORDER NO. | MAX. OPEN | THROAT DEPTH | LxW | WEIGHT (kgs) | CODE NO. |
|-----------|-----------|--------------|-----------|--------------|----------|
| VCL-2C | 1-7/8" | 1-7/8" | 120x84mm | 0.22 | 1003-210 |
| VCL-3C | 2-3/4" | 2" | 163x91mm | 0.38 | 1003-211 |
| VCL-4C | 3-7/8" | 2-1/2" | 195x102mm | 0.59 | 1003-212 |
| VCL-6C | 6" | 3-1/2" | 270x127mm | 1.18 | 1003-213 |
| VCL-8C | 7-3/8" | 4-1/2" | 345x161mm | 1.75 | 1003-214 |

Screw Jack

- Work clamping
- Material: S45C
- Support heavy weight



| ORDER NO. | ADJUSTABLE CAPACITY | A | B | C | ØD | KN | K.G. | CODE NO. |
|-----------|---------------------|-----|-----|----|----|----|------|----------|
| VSJ-40 | 40-50mm | 40 | 52 | 30 | 40 | 50 | 0.3 | 1014-000 |
| VSJ-70 | 65-90mm | 65 | 95 | 28 | 38 | 50 | 0.4 | 1014-001 |
| VSJ-150 | 90-140mm | 88 | 140 | 40 | 50 | 50 | 1.1 | 1014-002 |
| VSJ-250 | 140-230mm | 135 | 230 | 45 | 55 | 50 | 2.3 | 1014-003 |
| VSJ-500 | 265-360mm | 265 | 360 | 45 | 72 | 50 | 4.6 | 1014-004 |