



PATENT

NEW



VQCV-125H-L

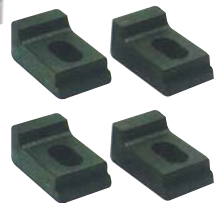
NEW

A GOOD POWERFUL CLAMPING WAY FOR SIDELOCK & STANDING POSITION & HEAVY CUTTING.



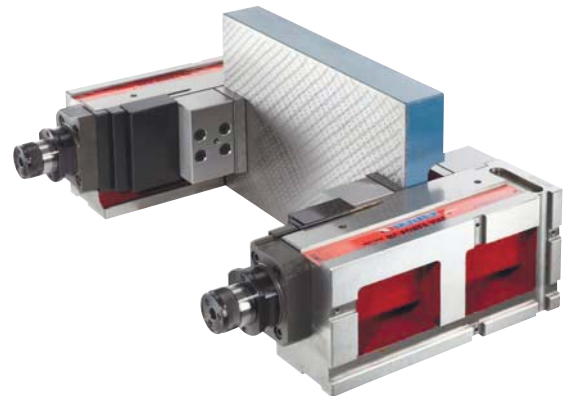
VQCV-125H-R

SIDE LOCK POSITION

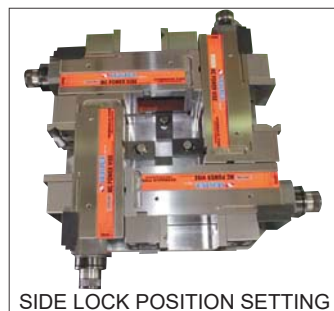


Features

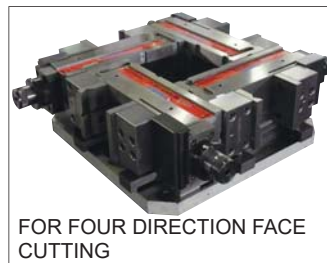
- Multiple purpose.
- Fast & Horizontal & Side setting. Heavy Duty.
- Firm & Rigid & Accurate.
- Unique design allows processing being easier.
- Fast : 2 location setting slots for locating key.
- Dust-proof : concealed spindle.
- Engraved cross shaped jaw for flat & round workpiece.
- All Parts are inter - changeable with VQC-series.
- Hydro line - one scale indicate about 1/3 of the max. clamp force.



VERTICAL SETTING



SIDE LOCK POSITION SETTING



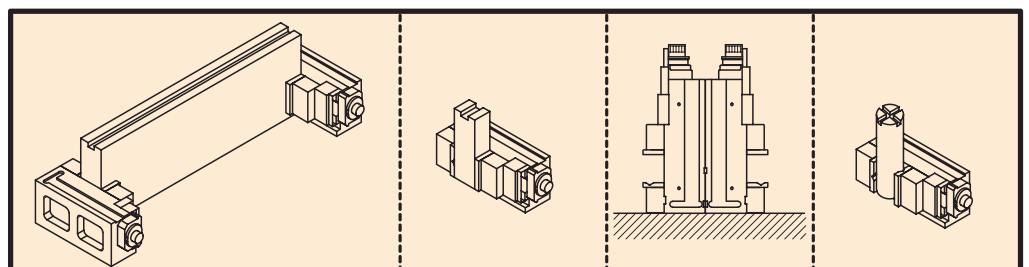
FOR FOUR DIRECTION FACE CUTTING

BACK TO BACK ALIGNMENT

- Strong & Stable
- Fast Setting



NEW DESIGN FOR BETTER CLAMPING WAY





Universal MC Power Vise



PATENT

NEW

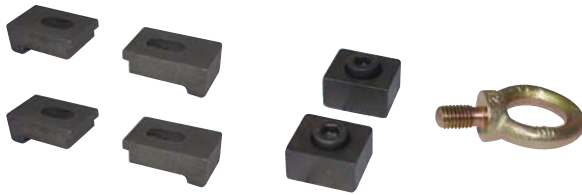
BEST FOR VERTICAL SETTING



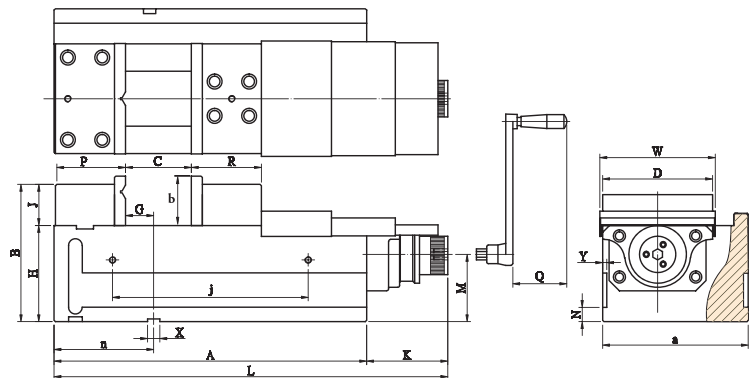
VQCV-125H-R



VQCV-125H-L



DIMENSION DIAGRAM



HORIZONTAL VERTICAL POSITION



● Strong Vertical Clamping



L LEFT HAND , R IS RIGHT HAND

ORDER NO.	CODE NO.
VQCV-125H - L	4005-091
VQCV-125H - R	4005-092
VQCV-160H - L	4005-093
VQCV-160H - R	4005-094

ORDER NO.	JAW b	JAW Open C	B	MAX. Clamping Force(8#KN)	G.W. kg
VQCV-125H- L R	72	165	180	40	53
VQCV-160H- L R	72	235	200	60	85

ORDER NO.	A	B	a	D	P	R	G	H	J	K
VQCV-125H- L R	364	180	177	125	94	90	43	120	60	113.5
VQCV-160H- L R	455	200	212	160	102	102	42	140	60	125.5

ORDER NO.	L	M	N	Q	W	X	Y	C OPEN	j	n
VQCV-125H- L R	477.5	85	21	73	135	18	7	162	215	139
VQCV-160H- L R	580.5	98	21	93	170	18	7	235	285	145

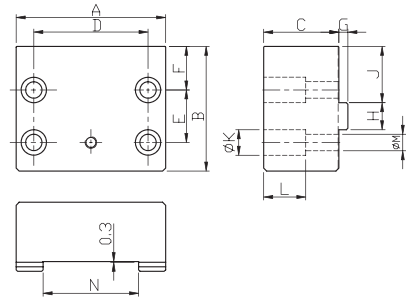
MC POWER VISE

OPTIONAL: Soft jaw for different shape workpiece FJ & MJ can for cutting

FJ



Fixed side



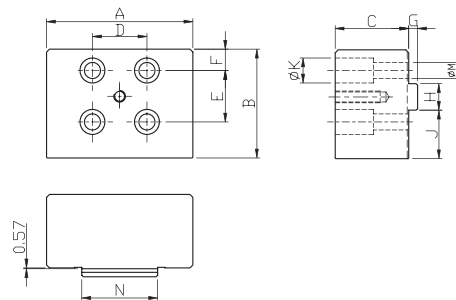
SOFT FIXED JAW

ORDER NO.	A	B	C	D	E	F	G	H	J	K	L	M	N	WEIGHT	CODE NO.
VQC-100FJ	99.5	73	50	76	35	19	6	18	27.5	17	26	11	55	2.97	4005-013C
VQC-125FJ	124.5	91	60	88	45	29.5	8	24	40	19	33.5	13	63	4.96	4005-014
VQC-160FJ	159.5	102	60	124	50	34	9	28	45	22	30	15	84	7.2	4005-015
VQC-160L-FJ	159.5	102	60	124	50	34	9	28	45	22	30	15	84	7.2	4005-016
VQC-200L-FJ	200	122	75	140	62	40	9	28	57	25	37	17	100	3.61	4005-016A

MJ



Movable side



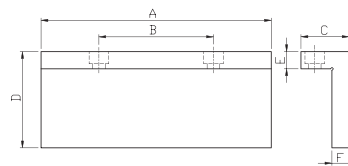
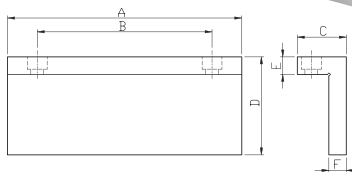
SOFT MOVEABLE JAW

ORDER NO.	A	B	C	D	E	F	G	H	J	K	L	M	N	WEIGHT	CODE NO.
VQC-100MJ	99.5	64	50	37	35	14.5	6	18	23	17	26	11	51.5	2.65	4005-017A
VQC-125MJ	124.5	87	60	35	42	29	8	24	38	19	33.5	13	59.5	4.73	4005-017
VQC-160MJ	159.5	102	60	56	50	34	9	28	45	22	30	15	80.5	7.25	4005-018
VQC-160L-MJ	159.5	102	60	56	50	34	9	28	45	22	30	15	80.5	7.25	4005-019
VQC-200L-MJ	200	117	75	62	59	39	9	28	54.5	25	37	17	95	13.08	4005-019A

Soft Jaws



Suit for VQC & VQC-H type



L TYPE FOR FIXED JAW

ORDER NO.	A	B	C	D	E	F	WEIGHT	CODE NO.
VQC-100FPF	100	70	37	49	15	15	0.81	4005-040
VQC-125FPF	125	80	37	54	15	15	1.06	4005-041
VQC-160FPF	160	100	42	59	15	15	1.55	4005-042
VQC-200FPF	201	150	42	84	15	15	2.56	4005-043

L TYPE FOR MOVEABLE JAW

ORDER NO.	A	B	C	D	E	F	WEIGHT	CODE NO.
VQC-100FPM	100	40	37	49	15	15	0.81	4005-046
VQC-125FPM	125	50	37	54	15	15	1.06	4005-047
VQC-160FPM	160	80	42	59	15	15	1.55	4005-048
VQC-200FPM	201	100	42	84	15	15	2.56	4005-049

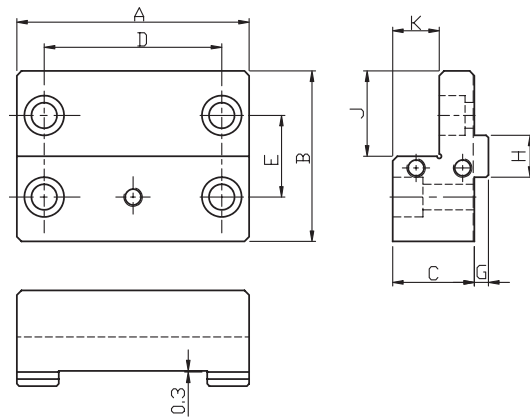


OPTIONAL: Hard jaw for thin type workpiece

WISE JAWS CAN TURN 180° FOR YOUR REQUIREMENT.



FJL

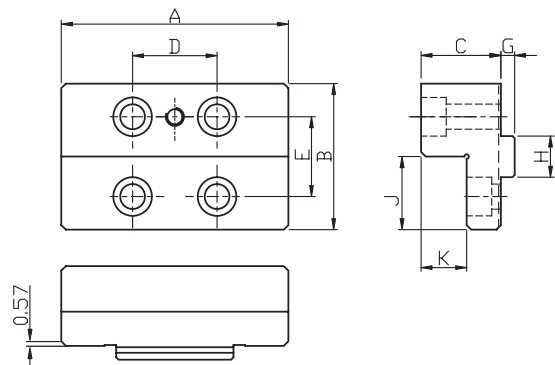


L TYPE FIXED JAW

ORDER NO.	A	B	C	D	E	G	H	J	K	WEIGHT	CODE NO.
VQC-100FJL	99.5	73	35	76	35	6	18	36.5	20	1.27	4005-010B
VQC-125FJL	124.5	78	40	88	45	8	24	39	20	2.09	4005-008A
VQC-160FJL	159.5	86	50	124	50	9	28	43	25	3.78	4005-009
VQC-160L-FJL	159.5	86	50	124	50	9	28	43	25	3.78	4005-010
VQC-200L-FJL	200	102	70	140	62	9	28	51	35	7.92	4005-010A



MJL



L TYPE MOVEABLE JAW

ORDER NO.	A	B	C	D	E	G	H	J	K	WEIGHT	CODE NO.
VQC-100MJL	99.5	64	35	37	35	6	18	32	20	1.15	4005-013B
VQC-125MJL	124.5	74	40	35	42	8	24	37	20	2.02	4005-011
VQC-160MJL	159.5	86	50	56	50	9	28	43	25	3.86	4005-012
VQC-160L-MJL	159.5	86	50	56	50	9	28	43	25	3.86	4005-013
VQC-200L-MJL	200	98	70	62	59	9	28	49	35	7.69	4005-013A