



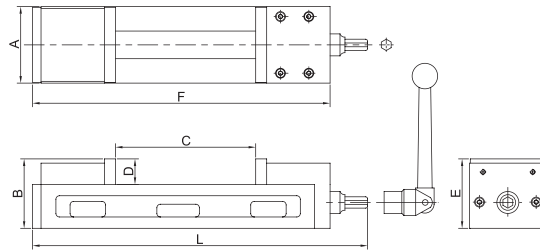
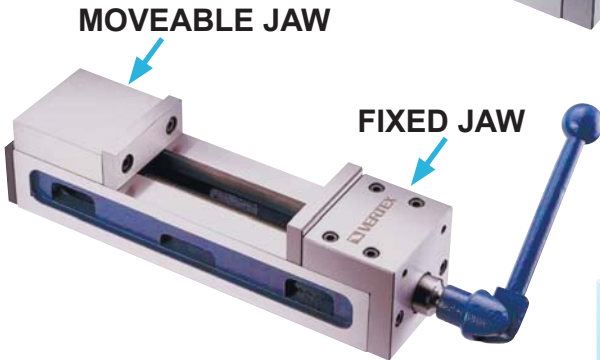
# Convenient Type Machine Vise



**NEW**



- Moveable jaw located at outer end and align surface for workpiece is in front of operator. It is convenient for loading or unloading workpiece on such design of vise.
- The overall length of this vise is shorter than other similar vises, but keep the more jaw opening. Save space on work table.
- Extra opened
- Semi-spherical segment eliminates jaw lifting and workpiece tilting.
- Time & energy saving
- Width 100 mm opened 180 mm.



LIGHT DUTY	JAW DOWNWARD	MORE SETTING POSITION	ACCURACY GUARANTEE 0.01/100 MM 0.02/50	TABLE HARDNESS	BENDING PROOF	MECHANICAL
------------	--------------	-----------------------	---	----------------	---------------	------------

ORDER NO.	A	B	C OPEN	D	E	F	L	Max. Clamp Force (kgf)	Weas (kgs)	CODE NO.
VCM-47	108	98	180	36	62	420	470	450	17.7	4005-080

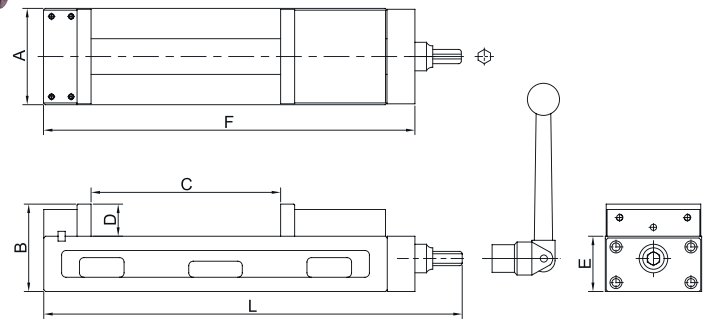


# Super Open Ang-Fixed Machine Vise

**NEW**



- The overall length of this vise is shorter than other similar vises, but keep the more jaw opening. Save space on work table.
- Semi-spherical segment eliminates jaw lifting and workpiece tilting.
- Vise bed frame hardend to HRC up is capable to obtain low weariness and last the high accuracy for long.
- Chip covers is applied on this vise to prevent from chips falling to leadscrew and inside of vise.
- Width 100 mm opened 210 mm super open.



LIGHT DUTY	JAW DOWNWARD	MORE SETTING POSITION	ACCURACY GUARANTEE 0.01/100 MM 0.02/50	TABLE HARDNESS	BENDING PROOF	MECHANICAL
------------	--------------	-----------------------	---	----------------	---------------	------------

ORDER NO.	A	B	C OPEN	D	E	F	L	Max. Clamp Force (kgf)	Weas (kgs)	CODE NO.
VMC-4L	108	98	203	36	62	420	470	450	17.3	4005-095