

Edge Finder with Beeper & Optical

- No need to rotate while measuring.
- The red light was sealed with setting red-gel; it can concentrate the light and resist water.
- The sensor beeps while the red light is on.
- The sensor will beep when the user couldn't see the reverse side or get a clear sight.
- Example. If sensor's light is working, visually you couldn't see inside of the inner hole, while probing the user can be warned by the beeper.
- When probe the deep hole, you can't see the red light, but you can hear the sound from beeper.
- Accuracy: within $\pm 0.005\text{mm}$.

OPTICAL TYPE WITH BEEPER

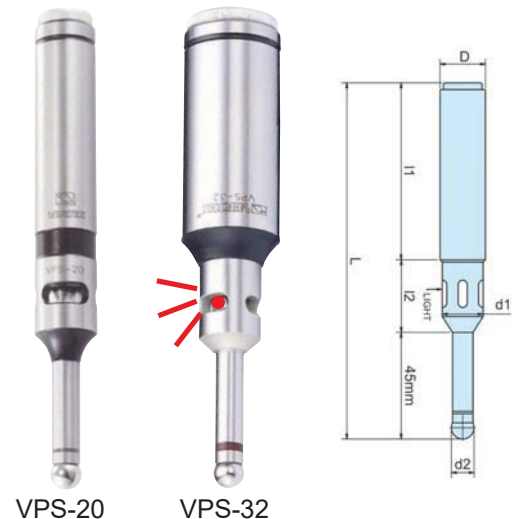
Unit:mm

ORDER NO.	D	d1	d2	L	I1	I2	BATTERY TYPE	WEIGHT (kg)	CODE NO.
VPS-20B	$\varnothing 20$	18	10	157	77	41	UM-5#(SP) x1PCS/12V	0.4	3402-001
VPS-32B	$\varnothing 32$	18	10	157	74	41		0.7	3402-002
VPS-3/4B	$\varnothing 3/4$	18	10	157	74	41		0.7	3402-012

Touch Point Sensor

Optical Type

Without Beeper



- High sensitivity position sensor.
- Red pilot can be seen clearly.
- Whole travel of red pilot is sparking, detecting also can be done during turning while spindle stops.
- Location of end surface, outer circle dia., inner circle dia. of the work-piece for processing can be detected with full effect.
- Devised with safety line excess, ball supported by spring, so even line excess, it will be separated easily from the base shown as the fig.
- The precision will reach up to micrometer while the ball returns to center position.
- Edge Finder
- Accuracy: Within $\pm 0.005\text{mm}$

OPTICAL TYPE

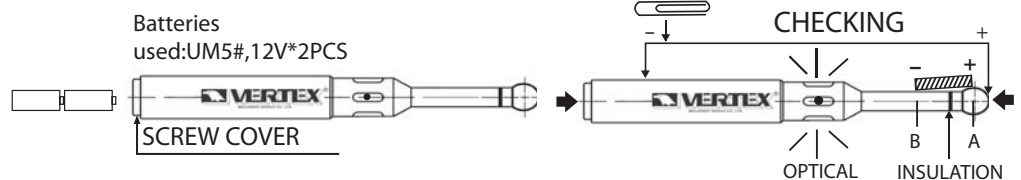
Unit:mm

ORDER NO.	D	d1	d2	L	I1	I2	BATTERY TYPE	WEIGHT (kg)	CODE NO.
VPS-20	20	18	10	157	76	33	UM-5#(SP) x2P/R1.1.5V	0.4	3402-003
VPS-32	32	18	10	157	74	41		0.7	3402-004

After Reading the Following instruction, please use touch point sensor correctly due to it's a highly sensitive position detector. Don't Rotate the touch point sensor while using it.

1. INSTALL BATTERY

Take off the screw cover and insert batteries correctly. Do not insert batteries upside down.

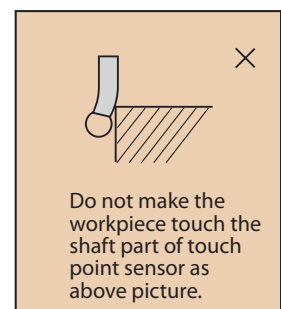
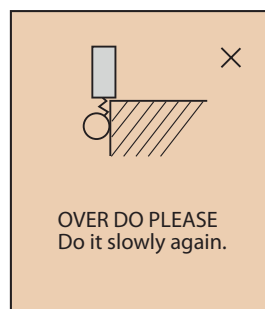
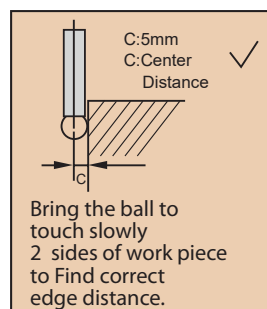


2. CONFIRMATION OF LIGHTING

CHECK the lighting of red lamp by touching A-B part with a metal (clip, L-PLATE etc.)

3. MEASURING METHOD

As soon as the ball (outside dia. 10mm \varnothing) touches the work piece with the main spindle stopped, The red lamp lights on.



請注意 / 光電式尋邊器不適合迴轉使用
Notice: optical edge finder is not suited FOR Rotation.